



REFERENCE	BT_2010_FR20_05_UK
DATE	5th March 2010
SUBJECT	Mandatory updates
PART	Switch plate, clutch shaft, chassis loom, fuel tank tower, front damper bracket, Omega, driveshaft outer joint yoke, upper flap support

Omega sticker

The following sticker must be present on all the Omega data loggers as it certifies the Omega software release which is in the box:

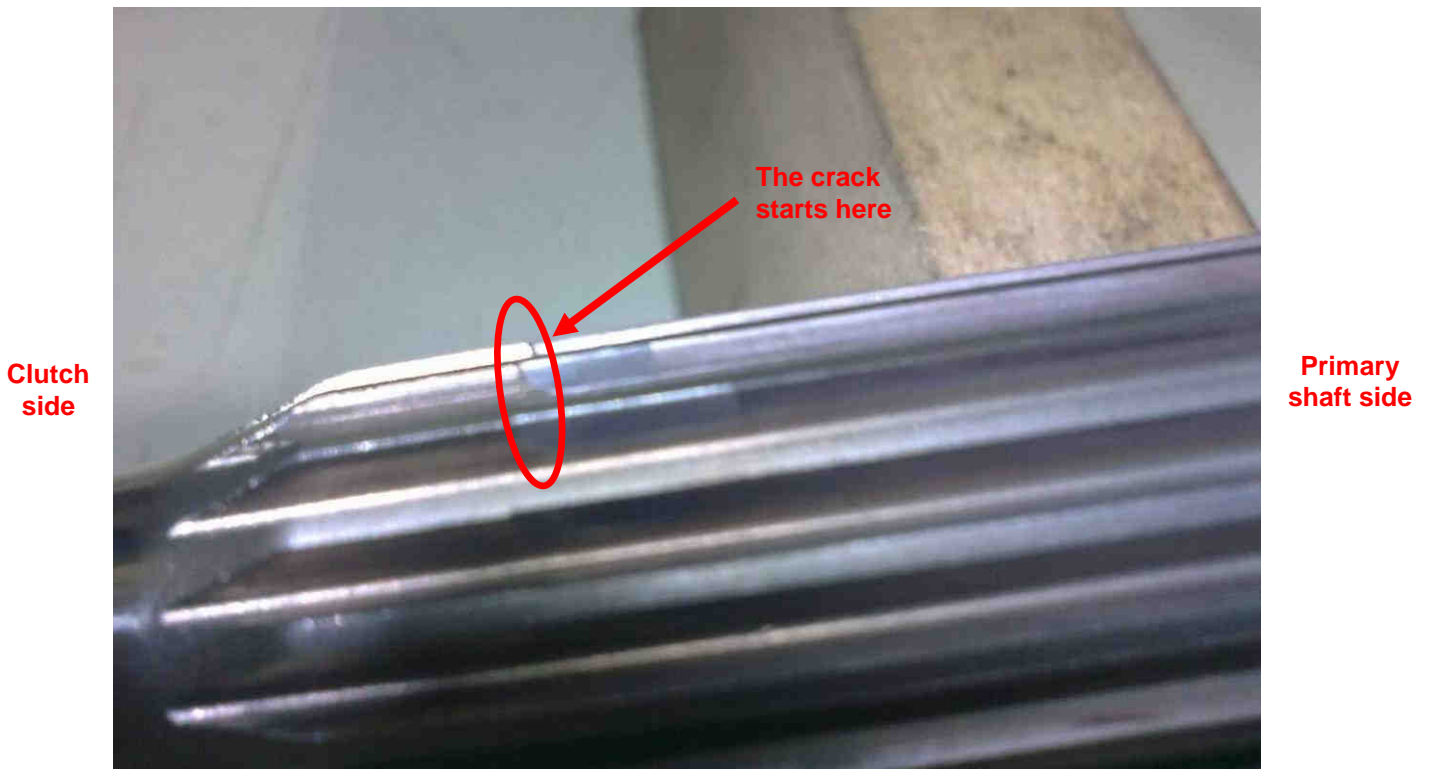


The first cars were delivered without this sticker so, if you don't have this sticker on your box, please contact the Renault Sport technical support to get one.

Clutch shaft cracking

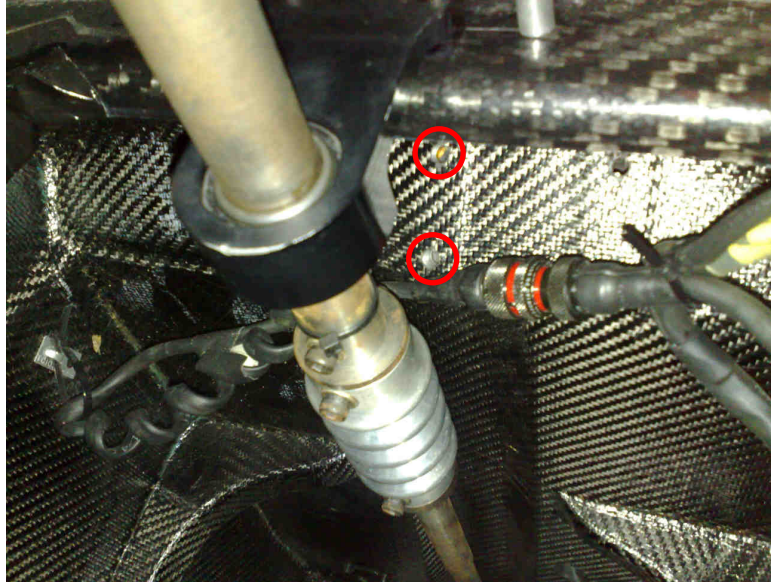
A new clutch shaft will be introduced. In order to use it, the primary shaft will have to be modified. Renault Sport will contact you later to explain the update process and schedule.

As the new parts will not be available before the Motorland tests, we ask all the teams to check their clutch shafts before every session even if they are less than 2,700 km of mileage. For information, please find below a picture of a shaft that started to crack:



Front damper bracket fitting

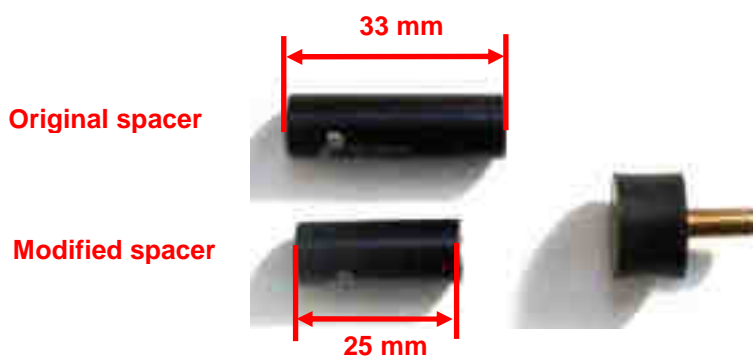
On all the cars delivered before the 25th of January, the screws used to tighten the front damper bracket to the chassis are too long. They must be cut as they can damage the upper steering column loom.



Switch plate mounting

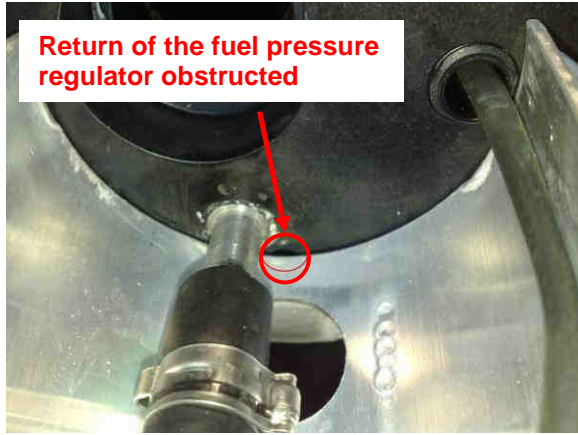
Following several broken wires on the switch plate, we have designed a new wiring specification. New switch plates will be dispatched for free before the first WSR meeting.

In addition to the new switch plates, it is now mandatory to fit the switch plate to the chassis using silent-blocs. These silent-blocs will be available in Barcelona, at the Renault Sport spare parts truck. In order to use these silent-blocs, it is necessary to shorten the spacers and the screws used to fit the switch plate, as shown below:



Fuel tank tower modification

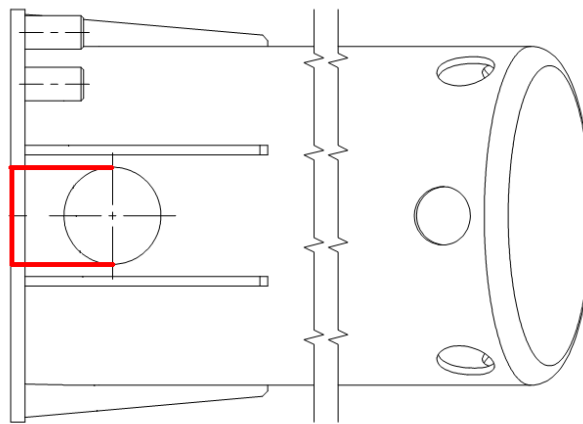
For safety reasons, It is mandatory to modify the fuel tank tower as shown on the pictures below (after Barcelona tests):



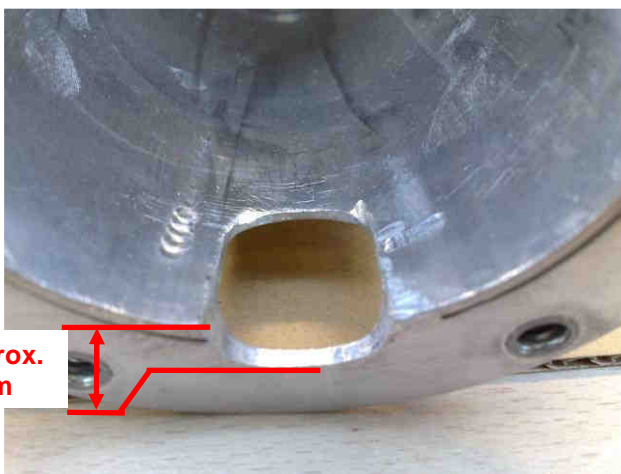
Before modification



After modification

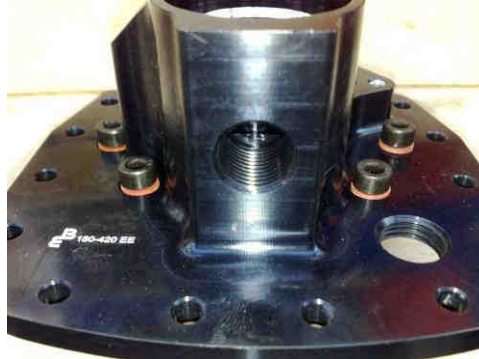


Original part: cut line in red



These modifications are already made on all the new cars delivered after the 20th of January.

Moreover, it is mandatory to add seals on the screws used to tighten the tower onto the fuel tank cover. On the car delivered after the 20th of January, 4 seals are already mounted:



This modification must be made before Magny-Cours tests. Seals will be available at the Renault Sport spare parts truck at the end of Barcelona test.

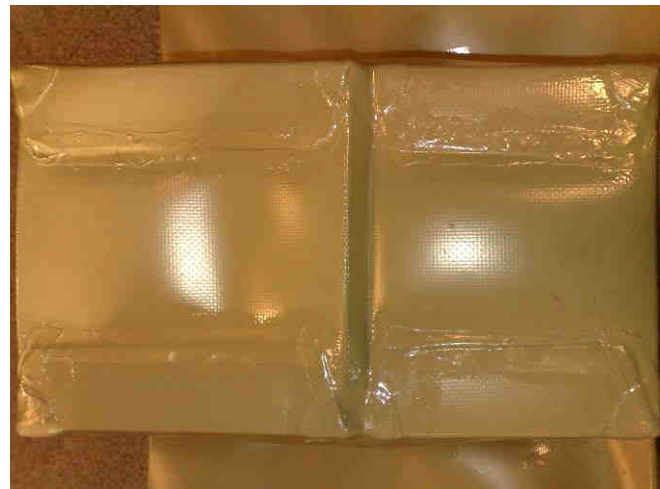
Fuel tank modification

Following fuel tank leaks, the fuel tank specification has been updated. As a consequence, all the fuel tanks must be updated to the last specification. The fuel tanks mounted on all the cars delivered after the 8th of February are already updated.

Fiber patches have been added on the sharp edges and on all the glued sections:



On sharp edges



On glued sections

To update the first fuel tank, they must be sent to Alpine after the Motorland tests. They will be sent back directly to your workshops before the first WSR meeting.

Chassis loom modification

For reliability and mounting reasons, the chassis looms have been modified on all the cars delivered after the 25th of January. The Omega and CBNT wires and also the chassis to engine wire are now shorter. To recognise which type of loom do you have in your car:



Original and long Omega and CBNT wires

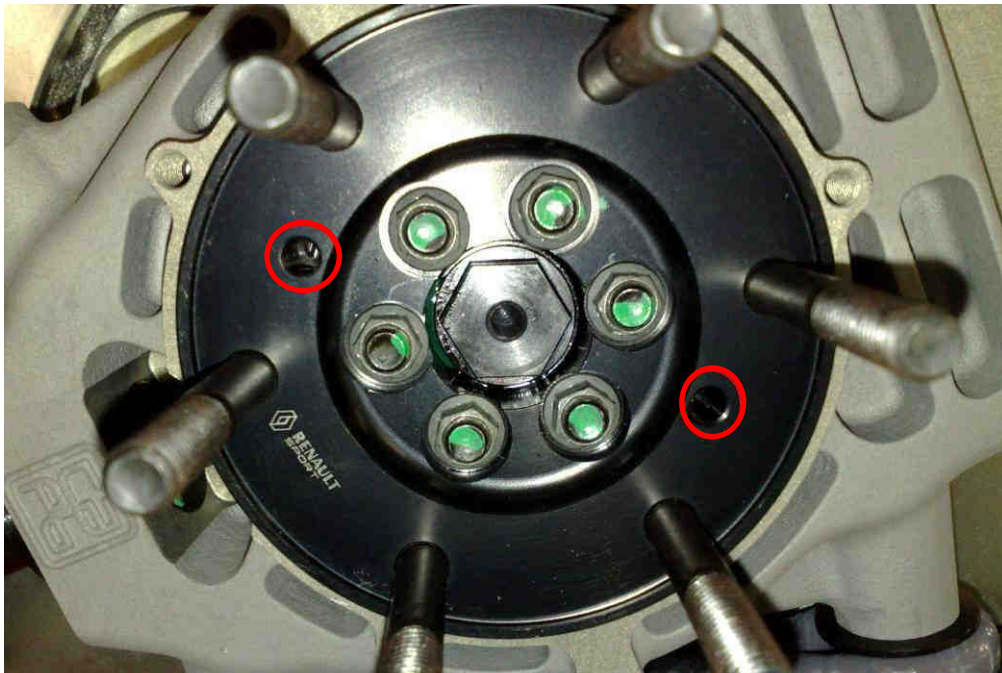


Modified loom

All the looms which are not yet modified will be collected at the end of the Magny-Cours tests. They will be dispatched modified on Tuesday the 23rd of March directly in Motorland.

Grease out of the driveshaft joint

In some cases, grease can go out of the joint between the outer joint yoke and the upright. In order to avoid these leaks, it is allowed and recommended to fill the holes designed to remove the yoke from the wheel bearing:



Upper flap support

To prevent the upper flap from bending, a support has been produced. This part will be available at the Renault Sport spare parts truck during Barcelona tests. This support must be fitted with silicon.

