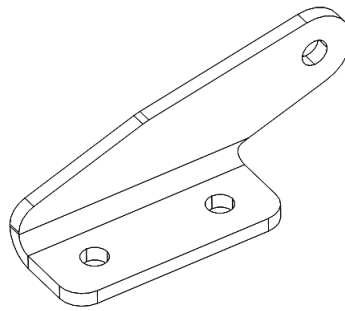


REFERENCE	BT_2010_FR20_13_UK
DATE	2 nd June 2010
SUBJECT	Windscreen, new front adjustable flap bracket, additional rear engine support
PART	Front adjustable flap bracket, rear engine support

1. New front adjustable flap bracket

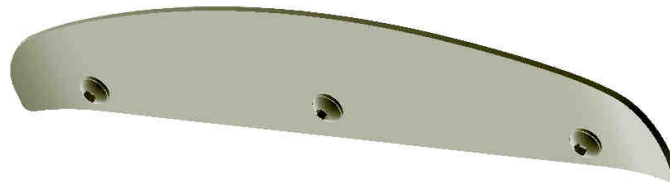
A new front adjustable flap bracket in aluminium (ref. 77 11 166 **636** & 77 11 166 **637**) is now available from your spare parts Department:



The previous bracket versions are still allowed but not available anymore.

2. Windscreen

An official Formula Renault 2.0 Windscreen, ref. 77 11 166 670 is now available.



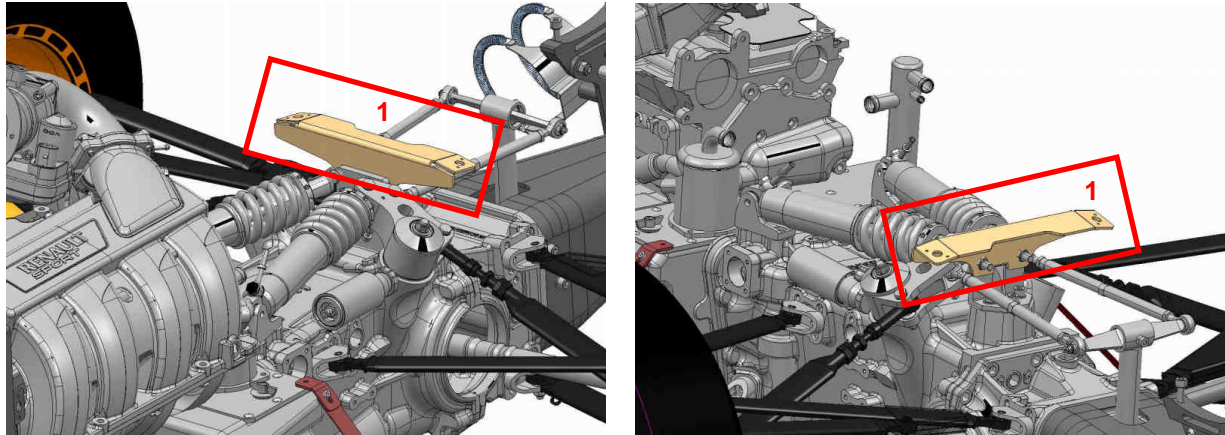
The use of this part is not compulsory.

This part will be the only one allowed to compete with a Formula Renault 2.0 from the 8th June, 2010.

3. New rear engine cover support

A rear engine cover support has been designed to prevent the engine cover from moving under aerodynamic forces. This new support will be dispatched for free to all the cars for your next race.

The support (1) is mounted on the droop bracket (ref. 77 11 166 543), tightened against the bracket using the nuts of the droop screws, as shown below:



The engine cover is fastened on the rear support using 2 Dzus®

Fitting instructions:

1. Mount the support on the car.
2. Mount the engine cover on the car. Ensure that all the original fasteners are tightened.



3. Mark the big holes on the inner skin of the engine cover



4. Mark the other 4 holes with a diameter of 4.5 mm (1) on the inner skin of the engine cover.



5. Remove the engine cover then drill the big holes at $\varnothing 16$ mm and the 4 other small holes at $\varnothing 3.2$ mm.
6. Use the holes of $\varnothing 3.2$ mm (2) to fit the Dzus® springs on the support.
7. Fit the Dzus® on the engine cover using rivets of $\varnothing 3.2$ mm in correspondence with the holes (1).

The use of this part is now compulsory.

Note: the support will be delivered with its complete Dzus®.