

REFERENCE	BT_2010_FR20_15_UK
DATE	22 th June 2010
SUBJECT	Additional floor stay
PART	Front floor stay

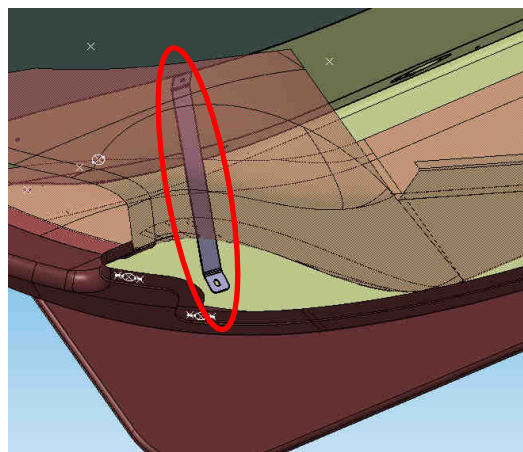
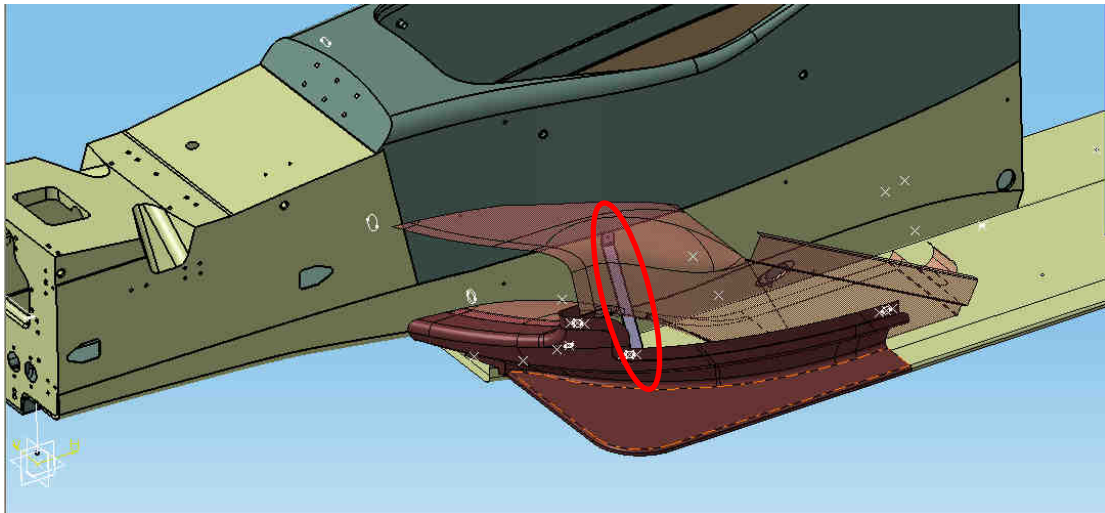
1. Additional floor stay

MOUNTING TIME = 1 hour 30 min

An additional floor stay (Renault ref: 77 11 166 694) has been designed to maintain the front part of the floor.

The reference engraved on the part is:

Front floor stay: 175-618

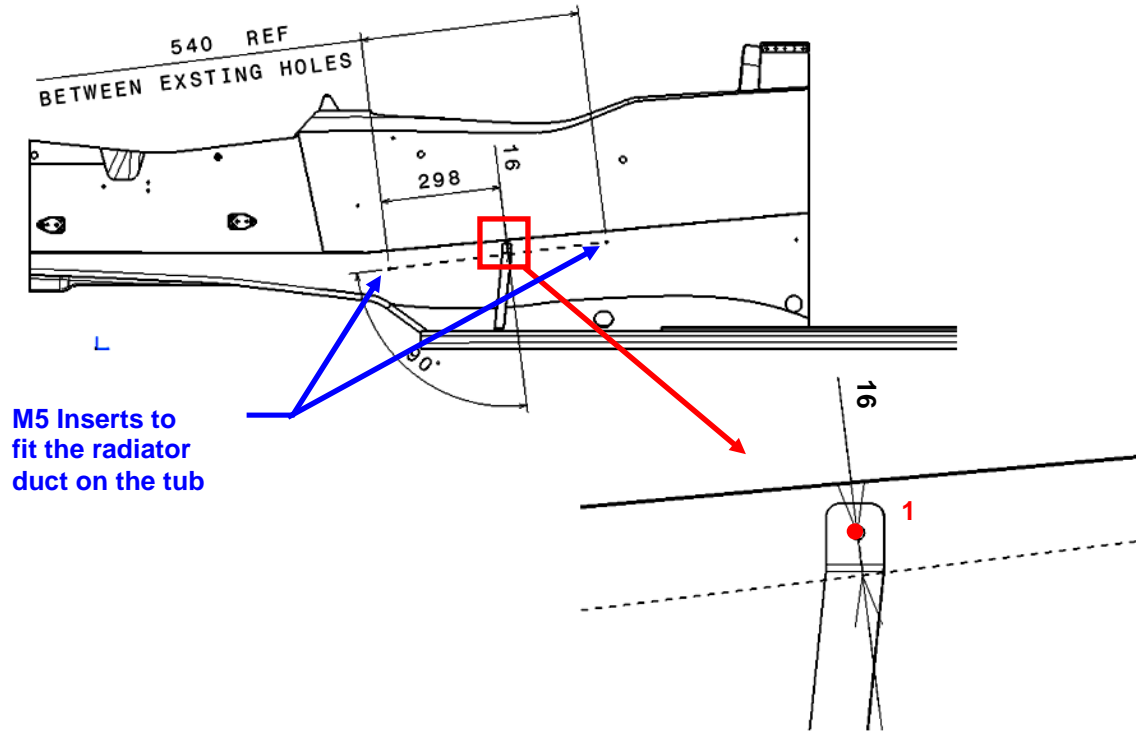


These floor stays have been dispatched for free to the Eurocup and UK cars and will be dispatched to the NEC cars before their next race.

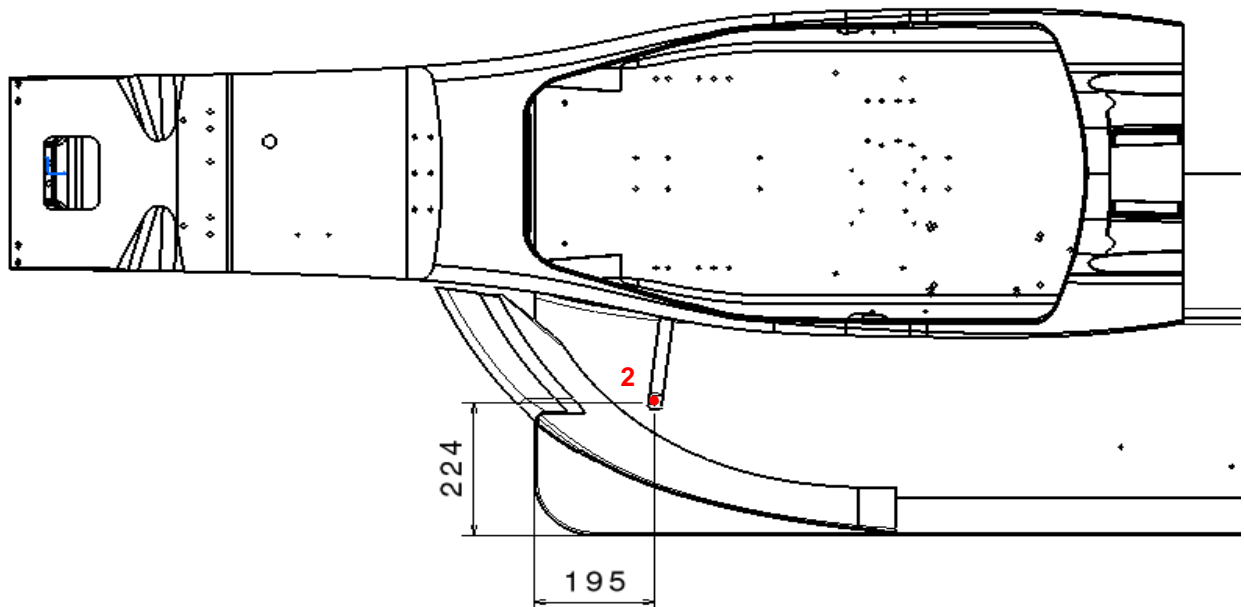
Their use is now mandatory.

To fit the stays, please respect the following instructions:

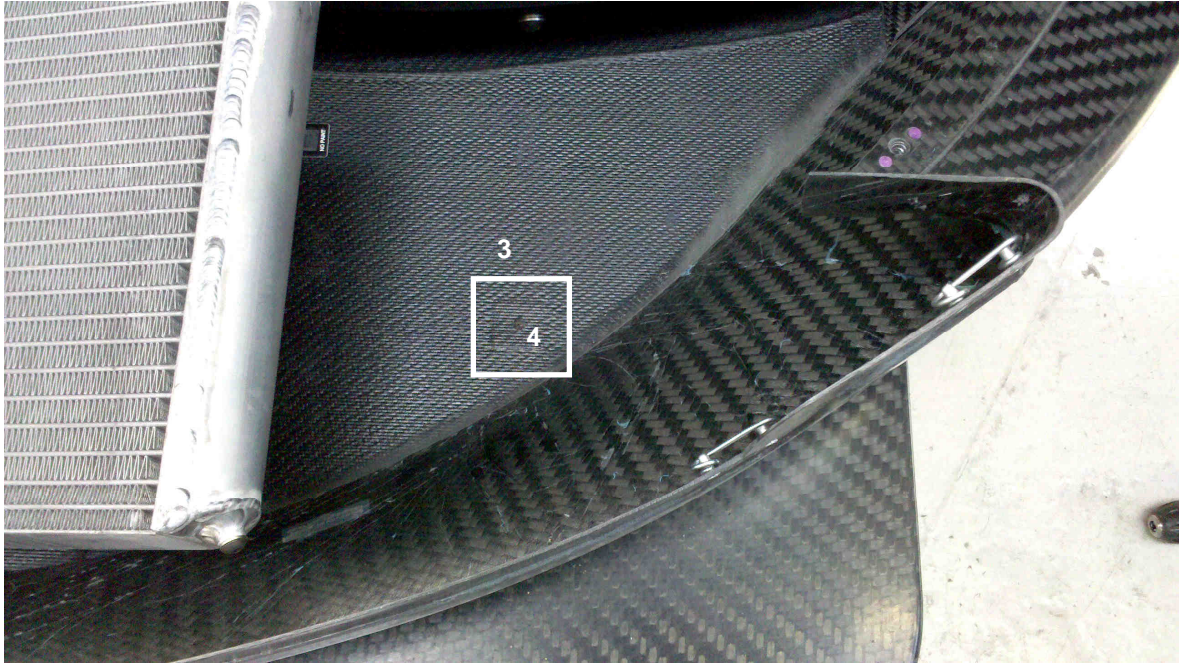
- a. Drill a new hole (1) through the tub $\varnothing 5.5\text{mm}$ respecting the following quotations:



- b. Drill a new hole (2) through the floors $\varnothing 5.5\text{mm}$ respecting the following quotations:



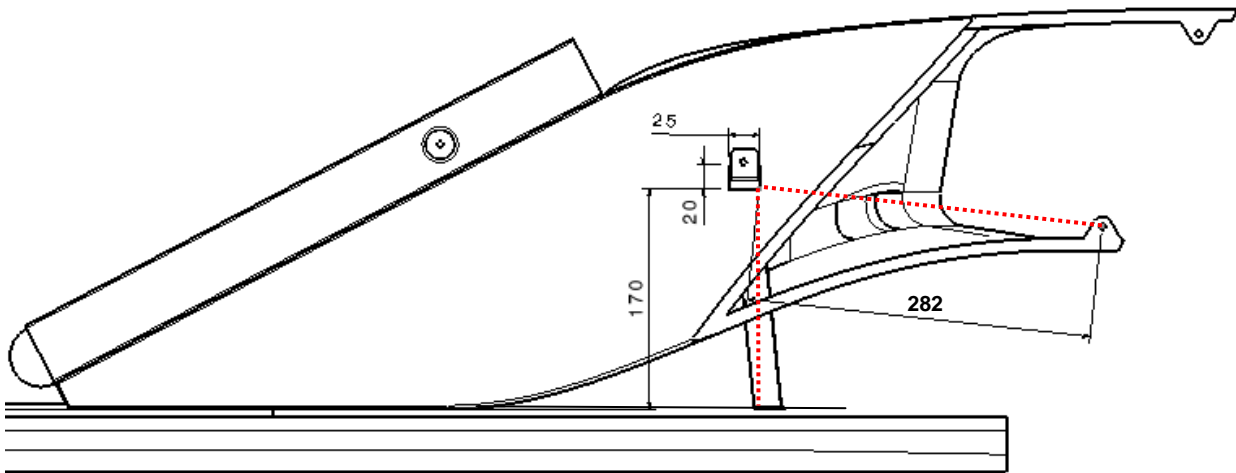
This hole must be drilled in an aluminium insert (3) which is already in the floor:



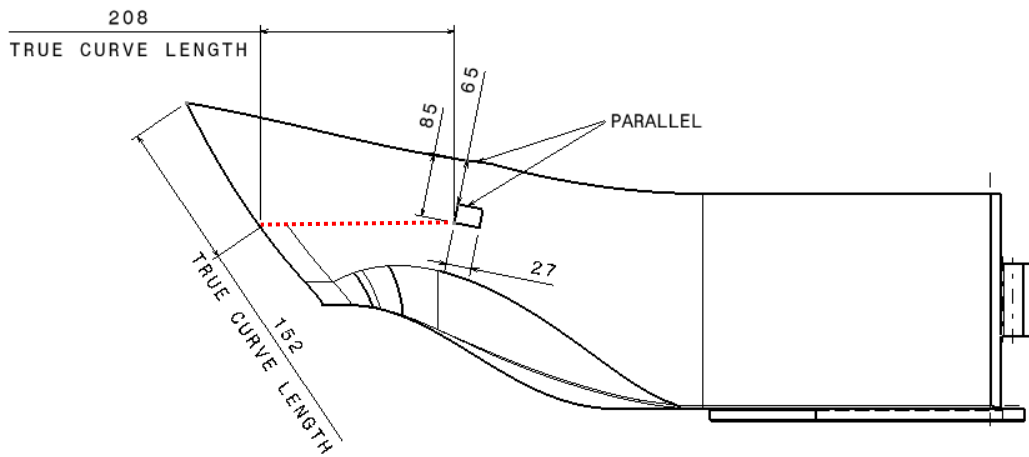
Warning: there is already a hole (4) in the middle of the insert which could twist your drill.

Note: it is allowed to make a countersink on the lower side of the hole to fit a M5 CSK screw.

- c. Trim the ducts as shown below: the quotes are only given to help you fitting them, but must be respected as much as possible:



Tub side view: left duct



Top sectional view: lower face of the left duct

- d. Mount the stay in the duct then fit the duct on the car.
- e. Put a M5 screw for the upper part of the stay from inside the tub.
- f. Tighten the other side of the stay with another M5 screw.



Additional floor stay fitted: right hand side