

REFERENCE	BT_2010_FR20_20_UK
DATE	9 <sup>th</sup> September 2010
SUBJECT	Battery charge, steering wheel quick release, loom upgrades, new air temperature wiring & fitting, brake reservoirs' extension,
PART	Battery loom, steering wheel quick release, engine & chassis looms, air temperature wiring & bracket, brake reservoirs

### 1. Loom upgrades

**DEPLOYMENT: EURO CUP DURING WSR SILVERSTONE  
UK DURING WSR SILVERSTONE  
NEC DURING RACE IN SPA**

**PREPARATION NEEDED = removal and fitting of the pedalbox**

The connectors used for the throttle pedal and barrel potentiometers will be modified on Thursday afternoon and Friday morning before your race. The IMC connectors will be replaced by higher quality connectors (4-ways DTM) like the one used for the throttle body.

The priority on Thursday will be to upgrade the connector of the throttle pedal potentiometer as it needs that you previously remove the pedalbox from the front of the cockpit. The loom should be long enough to be modified from the front of the car.

In addition to these modifications, the air temperature wires will be cut and replaced by a 2-ways connector. It means that an additional loom is added between the engine loom and the sensor as shown below:



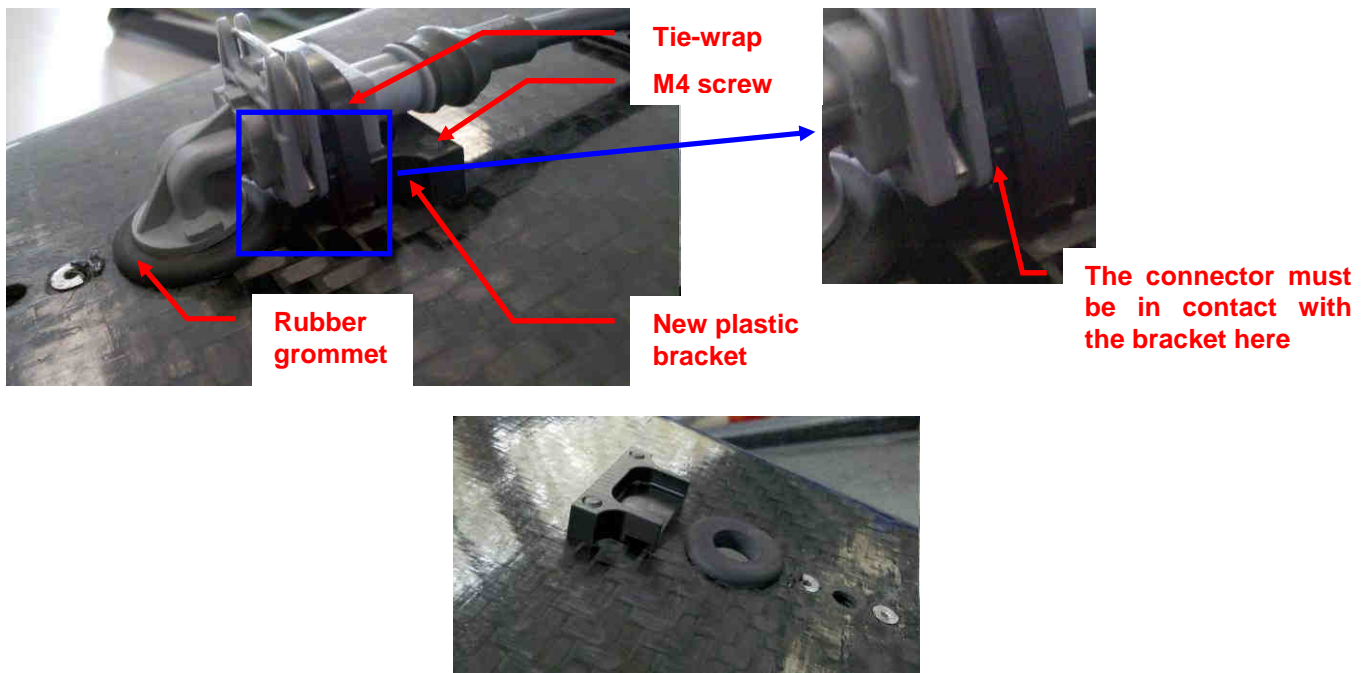
This additional loom (ref. 77 11 166 705) will be delivered for free to all the teams during your next race. Its use is now mandatory.

## 2. Air temperature sensor bracket

**DEPLOYMENT: EUROCUP ALREADY DONE  
UK DURING WSR SILVERSTONE  
NEC DURING RACE IN SPA**

**MOUNTING TIME = 30 min**

The new air temperature loom must be used with the following bracket (mounting already described in the Technical bulletin n°12):



### Bracket fitting instructions:

1. Mount the rubber grommet (ref. 77 11 166 668) on the airbox (the main hole must be  $\varnothing 18\text{mm}$ ).
2. Fit the new bracket (ref. 77 11 166 667) on the air temperature connector using a tie-wrap.
3. Mount the sensor in the grommet then mark the location of the holes on the airbox.
4. Drill the holes at  $\varnothing 4.5\text{mm}$ .
5. Fit the bracket on the airbox using 2 M4 screws (ref. 77 11 065 767)

The air temperature sensor bracket will be delivered for free to all the teams during your next race.

This bracket is now the only one allowed to compete with a Formula Renault 2.0.

### 3. Steering wheel quick release

**DEPLOYMENT: EUROCUP DURING WSR SILVERSTONE  
UK DURING WSR SILVERSTONE  
NEC DURING RACE IN SPA**

**MOUNTING TIME = 30 min**

A new quick release hub has been designed following a few parts cracked. All the hubs will be exchanged for free on all the cars. To get your new part, you must give the old one back to your Renault Sport spare parts dealer.

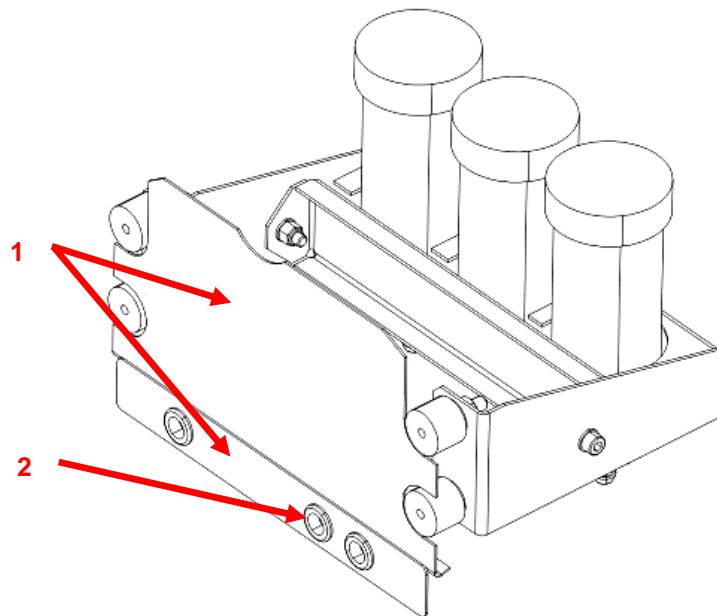
The new hub is now the only one allowed.

**Note:** only the black hub will be exchanged, not the yellow releaser.

### 4. Brake reservoirs' extensions

**FOR EUROCUP ONLY**

A complete kit for brake reservoirs' extensions is now available from your Renault Sport spare parts dealer under the reference 77 11 166 686. The reservoirs will be mounted outside of the tub, as shown on the pictures below:



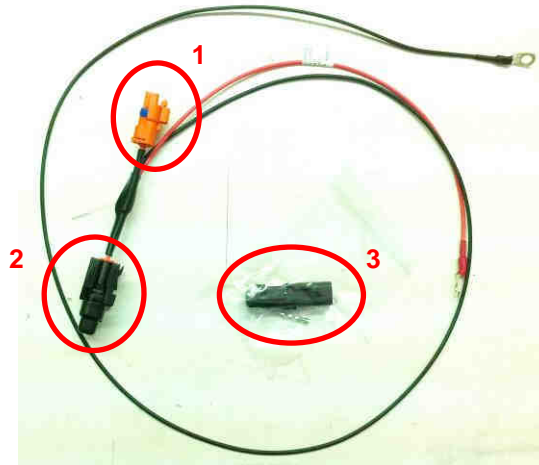
The opening on the front of the tub will be obstructed by 2 aluminium plates (1) fitted with Velcro. The pipes going from the master cylinders must go to the reservoirs through the 3 rubber grommets (2).

This mounting which is mandatory for the UK championship will be allowed in Eurocup Formula Renault 2.0 exclusively for the Silverstone meeting.

## 5. Battery charge

As previously explained in the Information Note n°6 , a loom to correctly charge the battery has been created. This loom is optional and designed to remain in the car. Then you will only need to plug your charger on the orange connector (1) to correctly charge the battery.

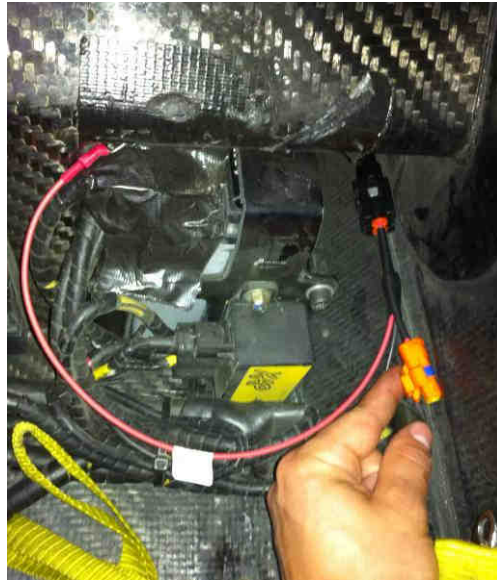
The positive wire is as short as possible and the charge is protected by a 15A waterproof fuse (2).



The ground is connected on the engine, below the air intake manifold as shown below:



The positive wire is directly connected on the + battery. Then the fuse and the orange connector must be fitted on the left-hand side of the battery as shown below:



**Note:** the connector to fit on your charger wires is included in the kit (3)

This kit is available from your Renault spare parts dealer under the reference 77 11 166 419 for a price of 25,47€ excl. VAT.