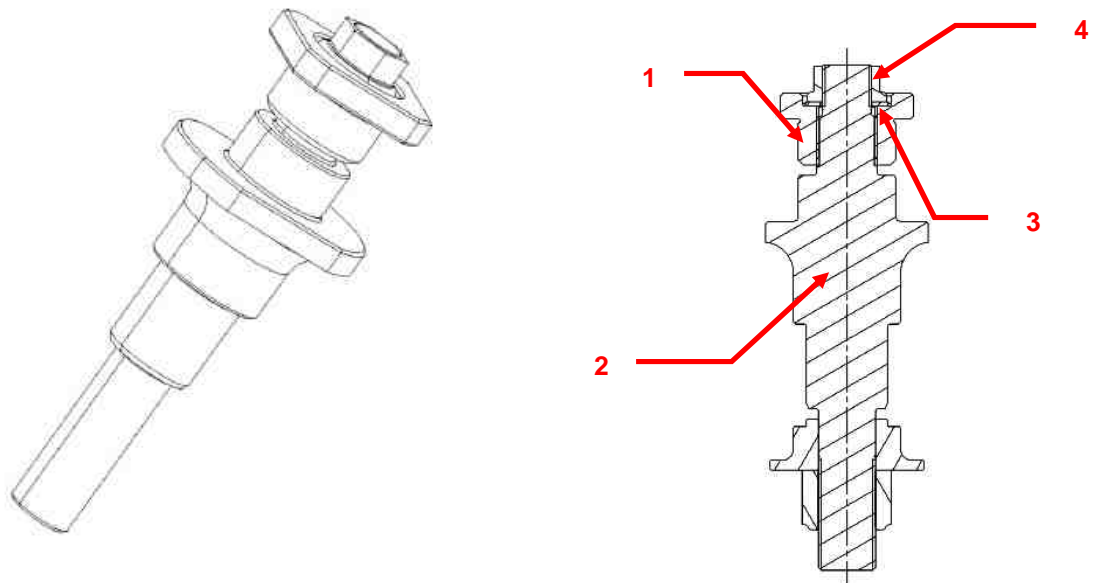


REFERENCE	BT_2010_FR20_24_UK
DATE	15 th December, 2010
SUBJECT	New rear upright pin, upright & fuel tank
PART	rear upright pin, upright, fuel tank

1. New rear upright pin

Because the pins can break if the nut is tightened too much, their design has been improved as shown below:

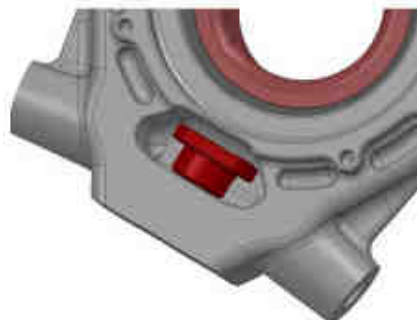


The new pin is now assembled with 4 parts:

- 1 axle (2) ref. 77 11 166 696
- 1 specific nut (1) ref 77 11 166 695 (left thread)
- 1 Knut 3/8 (4) : 77 11 159 421
- 1 NAS washer 3/8 (3) : 77 11 166 368

To mount these new pins, you must proceed as follow:

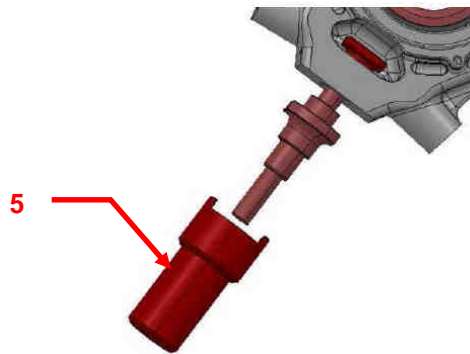
- 1) Heat the lower part of the upright only @ 120°C
- 2) Mount the nut (1) into the upright



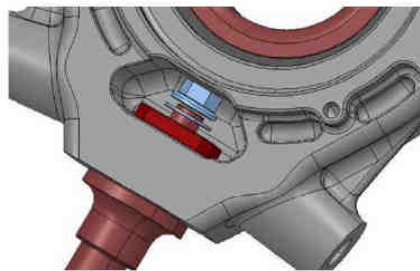
- 3) Mount the axle (2) into the upright by turning it into the nut (1) **!LEFT THREAD!**



- 4) Tighten the axle until contact with the upright lower face



- 5) Let slightly cool the upright then tighten the axle @ 61N.m using the specific tool (5) ref. 77 11 166 699
6) Mount the NAS washer (3)
7) Mount the nut (4) and tighten it @ 35N.m



It is possible to buy new uprights already assembled with lower pins and bearings:

- Front upright assembled with lower pin & bearing: ref. 77 11 166 680
- Rear upright assembled with lower pin & bearing: ref. 77 11 166 681
- Front upright fully assembled (+ hubs): ref. 77 11 166 682
- Rear upright fully assembled (+ hubs): ref. 77 11 166 683

The original rear upright pins (ref. 77 11 166 228) are not available anymore.

Note1: both old and new types are allowed for 2011 season.

Note2: the NAS washer will be in A category for 2011 season.

2. New fuel tank

A new fuel tank is now available under the reference 77 11 166 665 from your Renault Sport spare parts dealer. This new fuel tank remains at the same price as the original one. This fuel tank is really easier to manipulate.



The original fuel tank (ref. 77 11 166 002) is not anymore available.

Note: both types of fuel tank will be allowed for 2011 season.

3. New uprights

The upright has been reinforced in several areas. This new part is now the only one available and keep the same reference 77 11 166 201.

To recognize a reinforced upright, you must check the radius below:



Original upright: no radius



New upright

Note: both old and new types will be allowed for 2011 season.