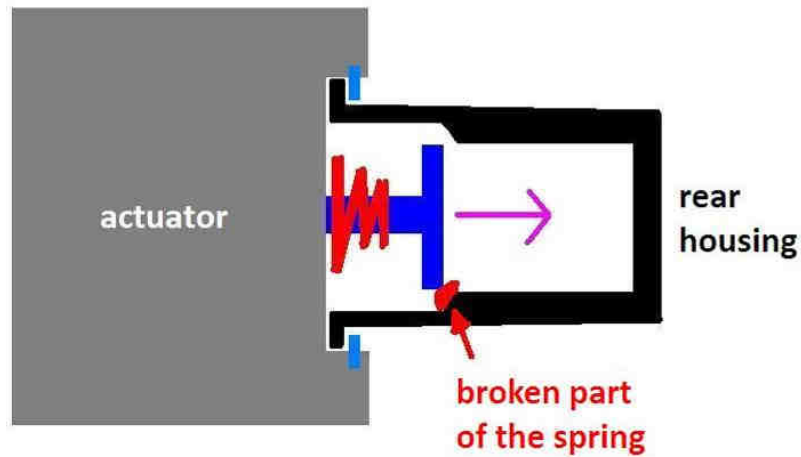


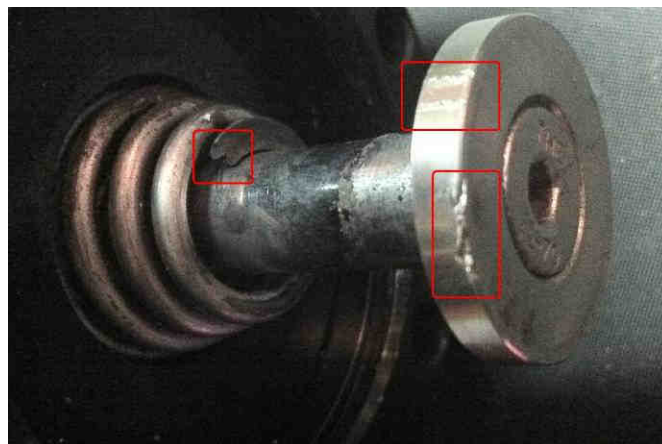
REFERENCE	BT_2011_FR20_10_UK
DATE	12th May, 2011
SUBJECT	actuator spring modification
PART	GB actuator

### 1. Actuator spring modification

The spring which is at the back of the actuator may break under specific conditions, causing gearshift issues. For this reason, Renault Sport recommends to remove the rear housing of the actuator to check if the spring is already broken or not.



If yes, simply remove the broken part from the housing and check if the axle washer and the inner side of the housing are clean.



If the spring is not broken yet, it is mandatory to modify it as described below:

The red part must be removed (aprox. 5mm)



Before



After