

REFERENCE	BT_2011_FR20_15_UK
DATE	July 21th, 2011
SUBJECT	New steering column support, emergency neutral system improvement, pedalbox kit for small drivers
PART	Steering column supports, emergency neutral system, pedalbox

1. New steering column support – ALLOWED FROM NOW

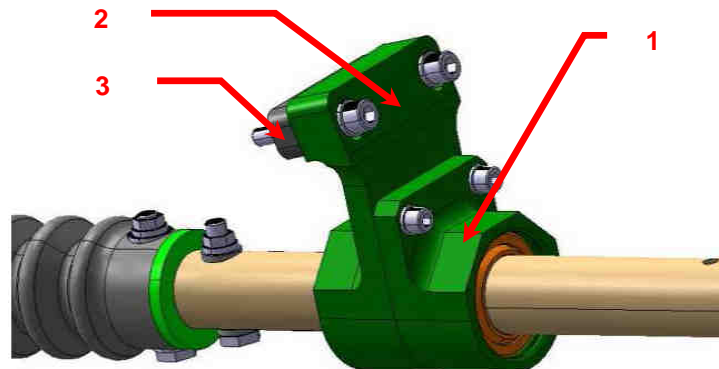
MANDATORY FROM: EUROCUPE: 5th meeting in Silverstone

NEC: 7th meeting in Most

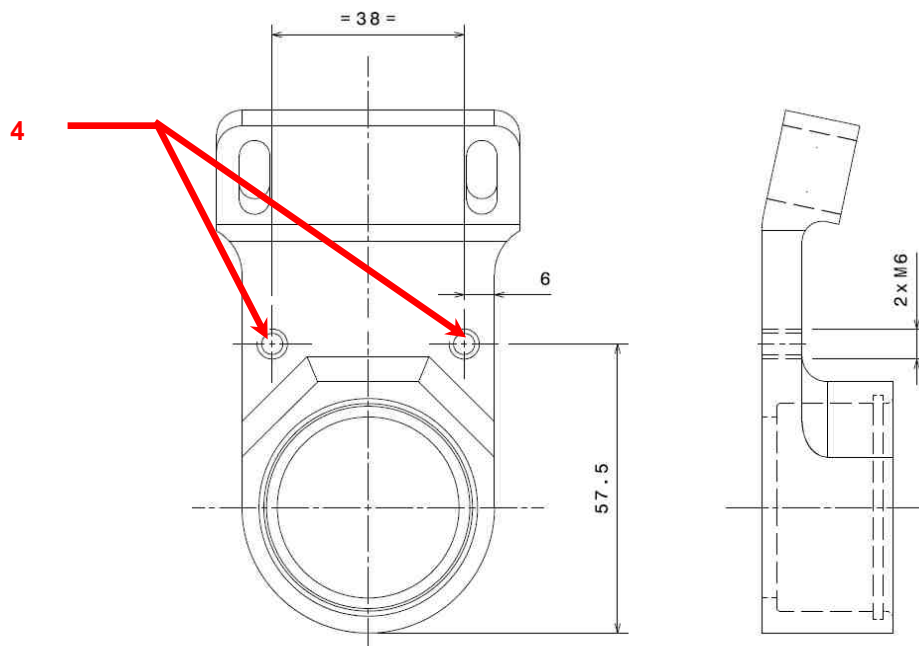
UK: 8th meeting in Rockingham

ALPS: 6th meeting in Spa Francorchamps

A second steering column support (1) has been added to the original one (2) as shown below:



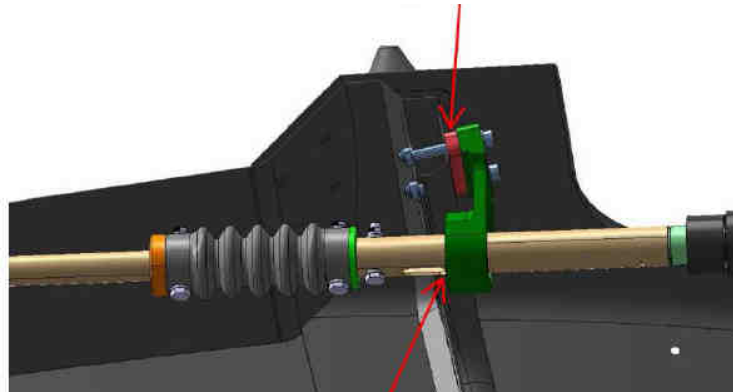
To mount this new support, the original one must be modified, adding 2 M6 threaded holes (4):



This support (bearing and snap ring included) will be dispatched for free to all the cars.

You must also note that:

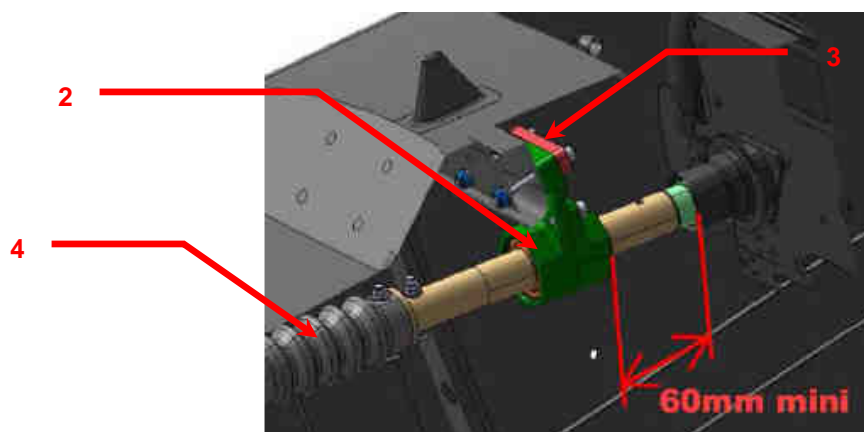
- if the steering column is in the most backward position the spacer (3) must be mounted between the support and the front bulkhead in order not to damage the steering column loom:



We remind you that the most backward position is ruled by the following quotation:



- If the steering column is in the most forward position, the spacer (3) must be mounted behind the steering column support to ensure enough space to compress the collapsible structure (4) in case of crash, as shown below:



In the intermediate position, the spacer (3) ref. 77 11 166 496 must be mounted following one of the possibilities described above.

References:

- New support: 77 11 166 733
- Bearing: 77 11 166 490
- Snap ring: 77 11 155 257

Note: the parts will be delivered to you at least one meeting earlier.

2. Emergency neutral system improvement – ALLOWED FROM NOW

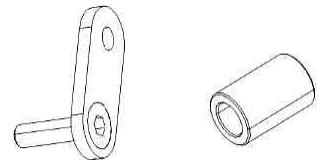
MANDATORY FROM: EUROCUPE: 5th meeting in Silverstone

NEC: 7th meeting in Most

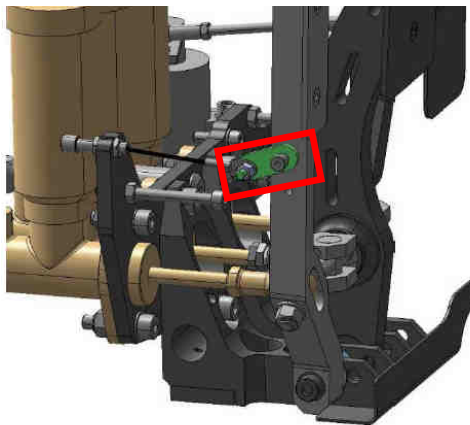
UK: 8th meeting in Rockingham

ALPS: 6th meeting in Spa Francorchamps

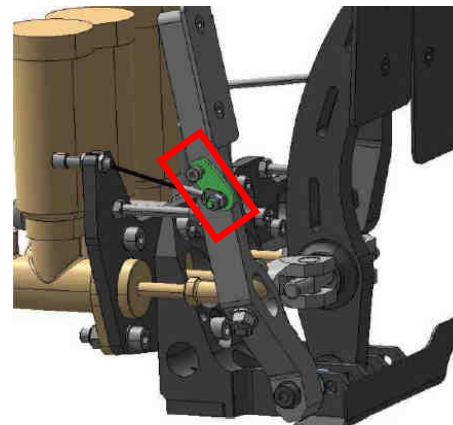
A kit (ref. 00 11 166 729) to improve the emergency neutral system will be dispatched for free to all the cars. It will prevent the cable from breaking behind the clutch pedal. It includes 2 parts: 1 small rod with a welded screw and one spacer.



The rod must be mounted between the cable and the clutch pedal as shown below:



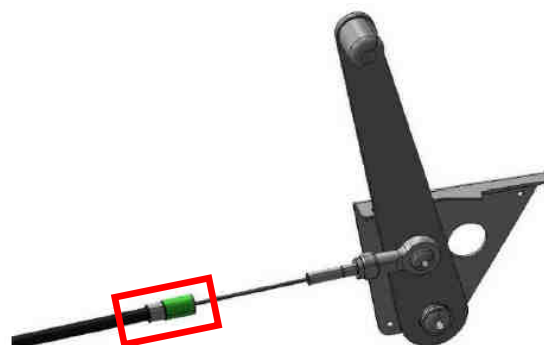
Clutch pedal: rest position



Clutch pedal: full stroke position

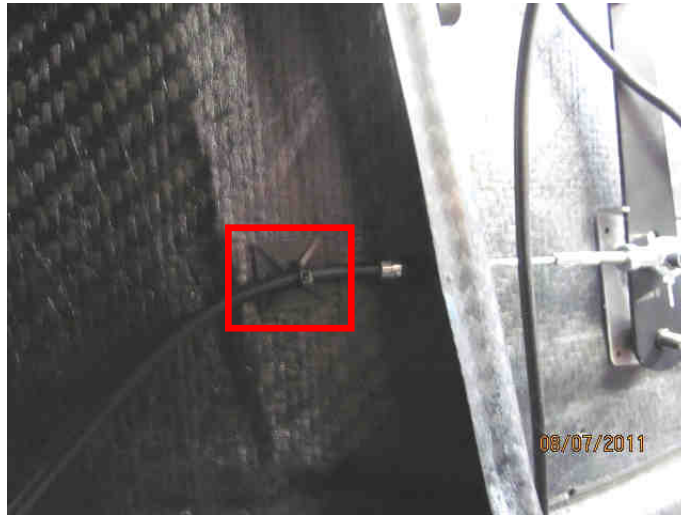
The rod replaces the spring (ref. 77 11 159 704) that was allowed between clutch pedal and pedalbox plate. Therefore, this spring is not allowed with this new assembly.

It may be necessary to add a spacer (in green below) on the cable as the cable should become too long (depending on your clutch pedal setup):

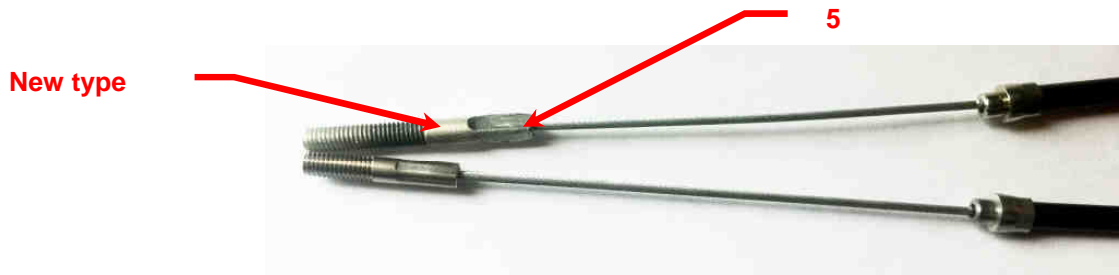


The spacer included in the kit is 15mm thick, but other spacers of 10mm and 20mm are also available. **It is allowed not to use spacers or to use more than one spacer. The global length of the spacer(s) is free.**

We advise to glue or to tape the spacer on the cable housing and to fit the cable housing to the chassis to keep it straight through the carbon wall as shown below:



You must also note that the cables in stock (ref. 77 11 166 580) have got now a 12 mm longer threaded part (neutral lever side), but the global length of the cable remains the same.



It may be necessary to grind the sharp edges (5) to mount the spacer on the cable.

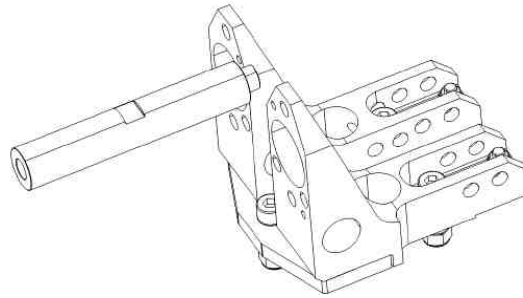
References:

- Rod: 77 11 166 729
- Spacer 10 mm: 77 11 166 730
- Spacer 15 mm: 77 11 166 731
- Spacer 20 mm: 77 11 166 732

Note: the parts will be delivered to you at least one meeting earlier.

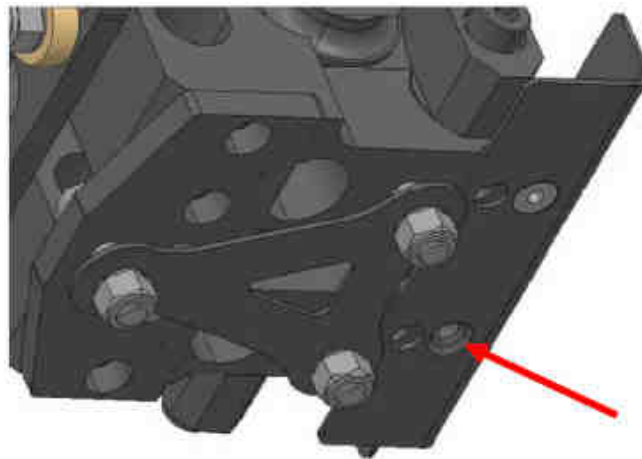
3. Pedalbox kit for small drivers

In case you need, a kit for small drivers has been designed to mount the pedalbox 35mm more backward. This kit includes 4 specific parts:



If used, the complete kit must be installed. It is not allowed to mix it with the original parts.

The heel rest must be modified to be assembled with M8 CSK screws as shown below:



This kit is now allowed and available under the reference 00 11 166 480.