

REFERENCE	BT_2011_FR20_4_UK
DATE	24th February, 2011
SUBJECT	Roll hoop fairing modification, new front droop screw
PART	Roll hoop fairing, front droop screw

1. Roll hoop fairing

APPLIED FROM: EUROcup: 1st meeting in Motorland
 NEC: 1st meeting in Hockenheim
 UK: 1st meeting in Brand Hatch
 ALPS: 1st meeting in Monza

Following the roll hoop upgrade, the roll hoop fairing is not well adjusted anymore to the chassis. It may result in a small gap created between the engine cover and the chassis.

For this reason, it is mandatory to modify the roll hoop fairing as shown below, removing the step between the fairing and the chassis:



Drill 5 holes in front of each M8 screw

Roll hoop

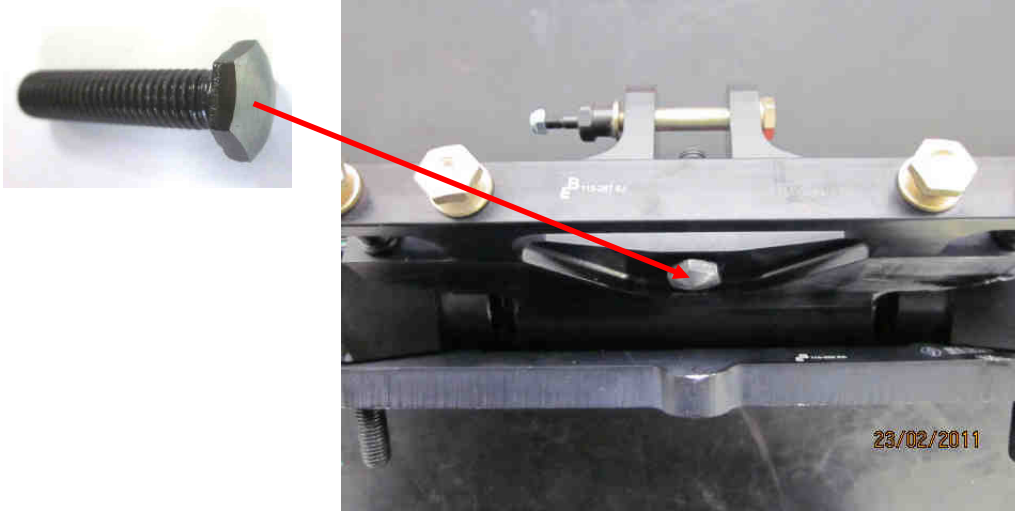


Roll hoop fairing

These patches can be removed or trimmed

2. Front droop screw

The original droop screw may wear the aluminium rocker plate which is below the front rocker. As a consequence, we have introduced a specific droop screw with a machined button head:



This screw is available under the reference 77 11 166 707. This screw will be dispatched for free to all the FR2.0 cars during your next official collective tests.

Note: this screw is now the only one allowed for 2011 season, and will be in A category.