

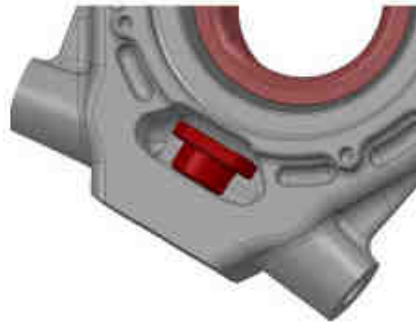
REFERENCE	BT_2011_FR20_5_UK
DATE	15th March, 2011
SUBJECT	New rear upright pin assembly
PART	Rear upright pin evo

### Rear upright pin evo

The mounting procedure described in Technical Bulletin n°24, 2010 has been slightly modified to ensure a safe use of these new upright pins.

To mount them, you must proceed as follow:

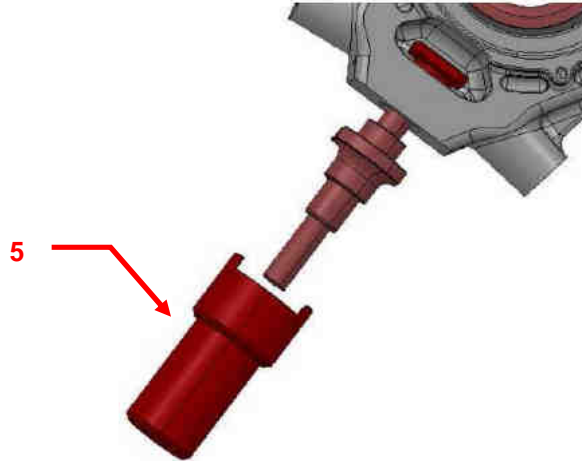
- 1) Heat the lower part of the upright only @ 120°C
- 2) Mount the nut (1) into the upright



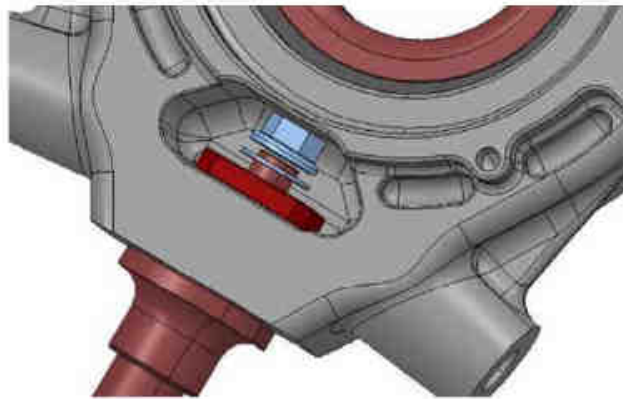
- 3) Mount the axle (2) which must be at ambient temperature (20°C), into the upright by turning it into the nut (1) **!LEFT THREAD!**



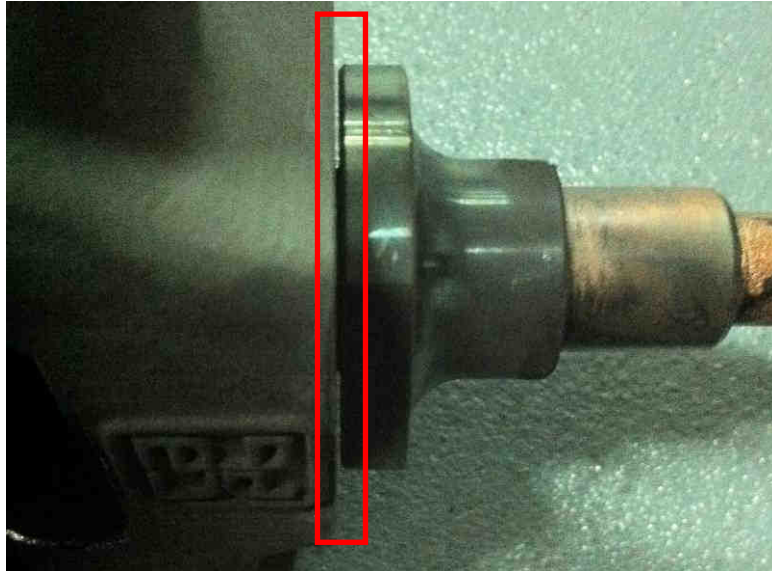
- 4) Tighten the axle **until contact with the upright lower face** (at this moment, the upright should be around 95-100°C)



- 5) **Immediately tighten the axle @ 95N.m** using the specific tool (5) ref. 77 11 166 699
- 6) Let the assembly cooling down then mount the NAS washer (3) and nut (4)
- 7) Tighten the nut @ 35N.m



You must especially take care of a good contact between the axle's shoulder and the upright lower face. In example, the following mounting is not safe and cannot prevent the axle from flexing:



*Gap between axle & upright*

When mounting a new upright pin into a used upright, you must check the condition of the chamfer below to ensure it is tightened correctly:



**Renault Sport asks all the teams that have already mounted a new upright pin into a used upright, either to heat the assembly (upright + new pin) and tighten the pin @ 90 N.m or to remove the pin to repeat the complete procedure below.**

**Note:** a specific torque wrench is now available from the Eurocup Renault Sport Spare parts truck for those who don't have the specific tool.