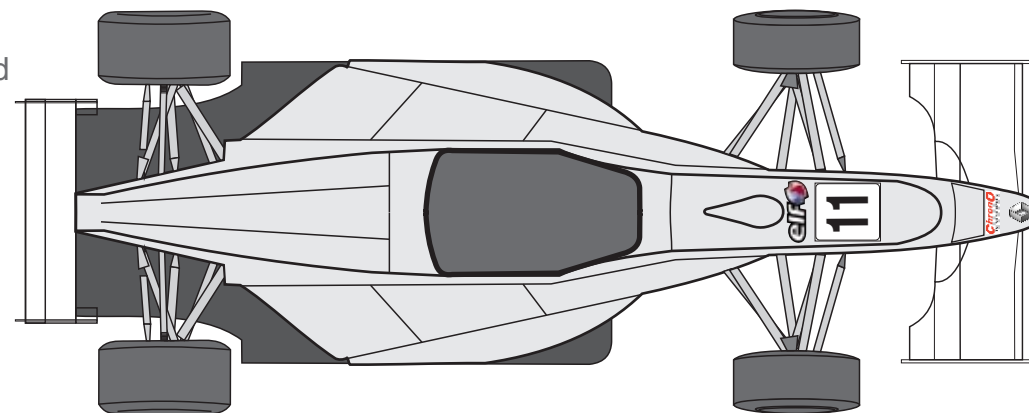
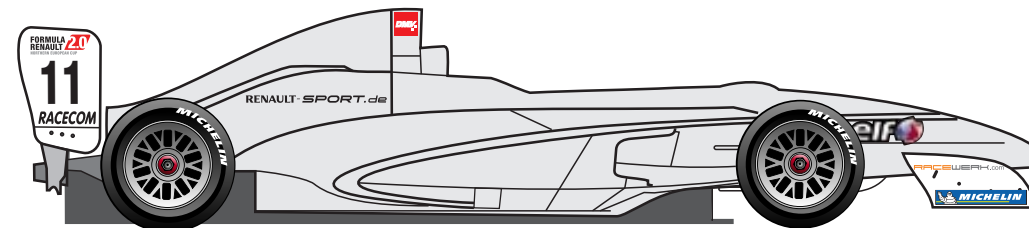




## Formula Renault 2.0 - NEC OFFICIAL IDENTIFICATION

1. Base Colours for the cars are free. ( Please observe ISG )  
The side panels of the rear wing must be white.
2. These instructions are a part of the Regulations for the Northern European Cup 2011. ( §3.13.2 )
3. Unmarked areas are free of use for marketing and sponsoring purposes.  
Please observe §3.13.2 in the regulations.
4. Drivers name with nationality flag must be fitted on the left and right hand side of the car, bellow the main rollover bar.  
The type height is 35mm.
5. The front start number mat must be fitted at a straight angle,  
50 mm above the Renault rhomb.
6. Only startnumbers issued from RENAULT DEUTSCHLAND AG & FR 2.0 EURO CUP are certified.



### IMPORTANT:

Only clean vehicles with completely fitted series sponsors kits will be scrutineered.

Stickers supplied from RENAULT DEUTSCHLAND AG may not be changed in any way.



RACEWERK.com



RACECOM



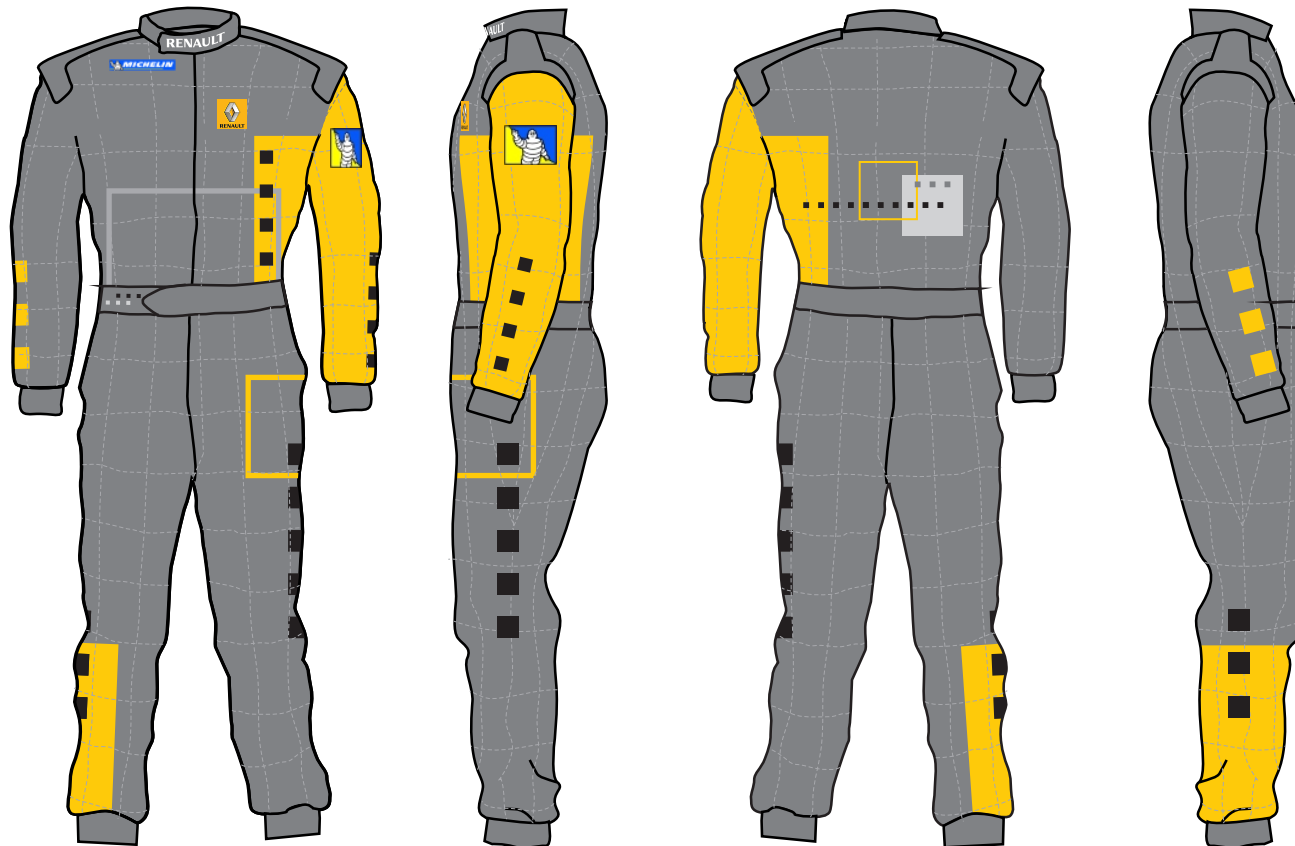


## Formula Renault 2.0 - NEC OFFICIAL IDENTIFICATION

### Placements of embroideries on the Driverssuit

Please observe paragraph 3.13.3  
of the regulations for the  
Northern European Cup 2011.

MICHELIN Bip on the left upper arm.



RACEWERK.com



RACECOM

