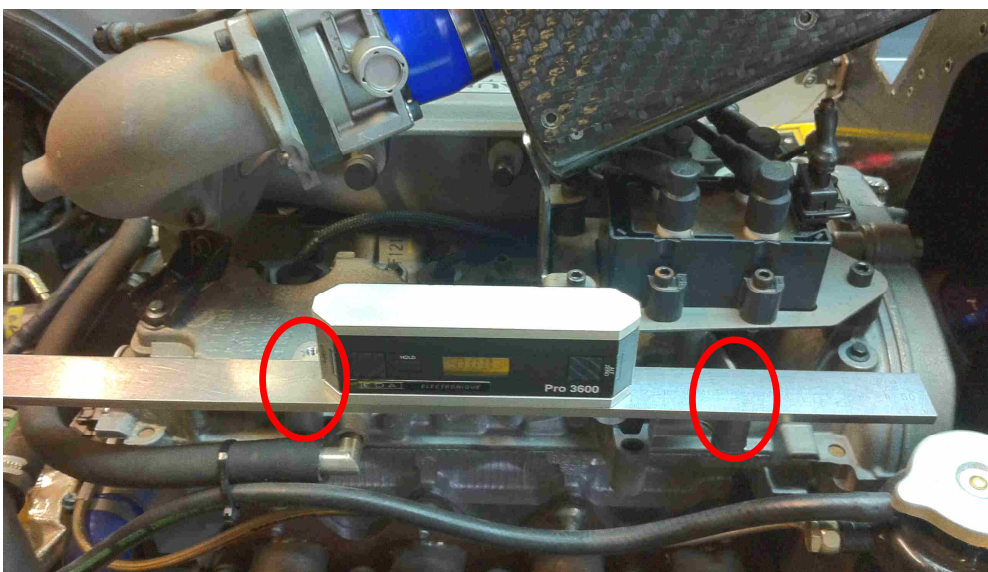
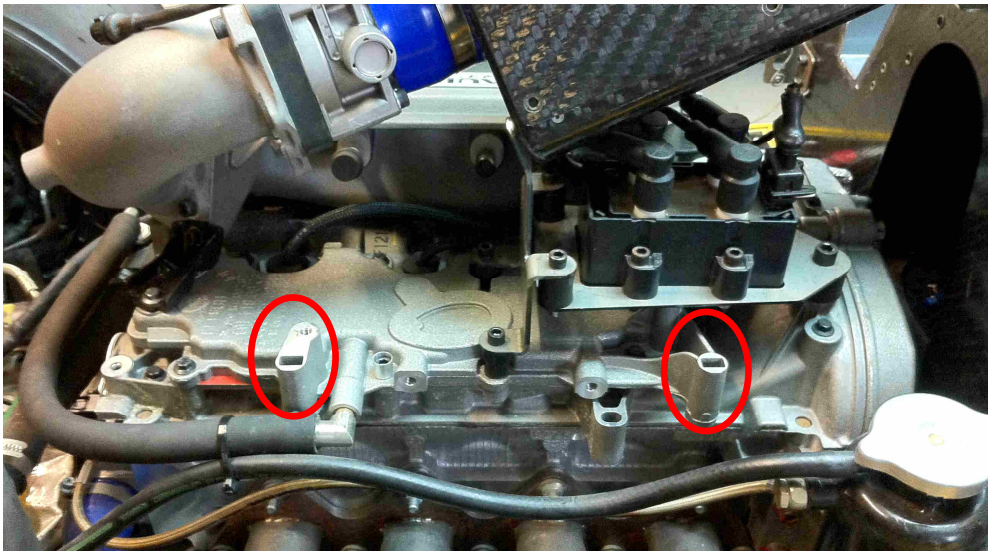


REFERENCE	BT_2012_FR20_5_UK
DATE	6th April, 2012
SUBJECT	New drive pegs, rear wing position
PART	Drive pegs, rear wing

**1. Rear wing position : new measurement procedure**

The car reference for this setup has changed to ease the measurement.

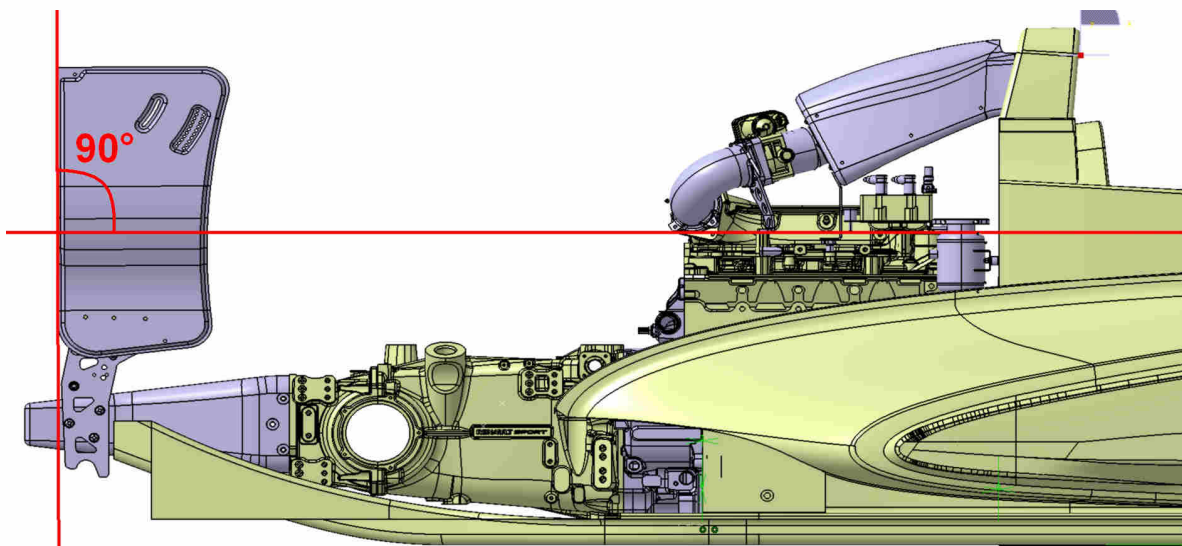
New car reference plane: top machined surfaces of engine cylinder head oil strainer.  
A rigid rule must be fitted on top of both flat surfaces prior to zero the digital level on this rule.



Endplate reference: rear vertical edge.

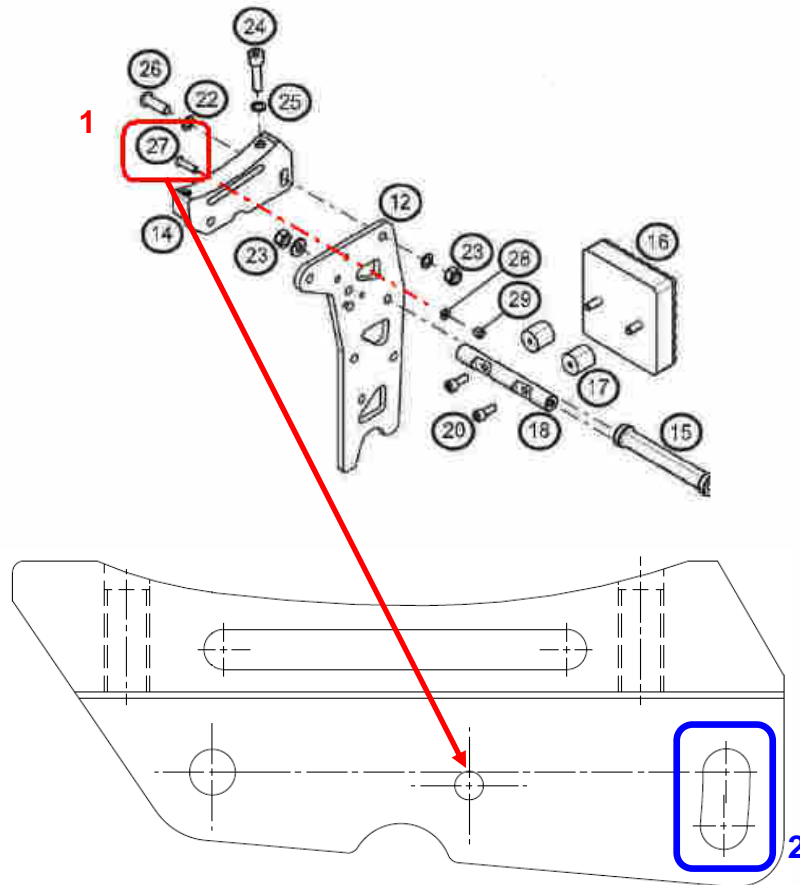


Therefore, the rear wing endplate angle is now ruled as per the picture below:



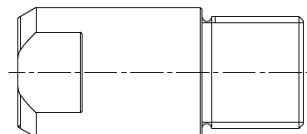
The angle must be  $90^{\circ} \pm 1^{\circ}$  and must be measured using a digital level.

In order to respect this angle, it is allowed to remove the screw (1) to be able to use the slot (2) in parts ref. 77 11 166 648 & 77 11 166 649 to setup the rear wing angle:

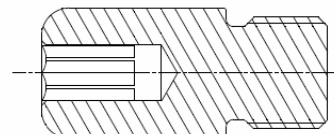


**2. New drive pegs – ALLOWED FROM NOW**

New drive pegs have been designed to ease wheel mounting and removing. Their machining tolerances have been slightly modified.



Original drive peg



New drive peg

They are now tightened using a 6mm Allen key to avoid material deformation on surfaces in contact with rims.

As the material used is stronger, they must be tightened at a higher torque of **55/60 N.m**, using **high strength thread locking glue** (Loctite 271® type).

The new drive pegs are available from your Renault Sport spare parts dealer under the reference 77 11 166 749.

Both old and new types are allowed for 2012 season.