

REFERENCE	BT_2013_FR20_12_UK
DATE	7th of May, 2013
SUBJECT	Seat modifications, rear flap support plate adjustment, stainless steel front flap bracket
PART	Carbon seat, driver seat, rear flap support plate, stainless steel front flap brackets

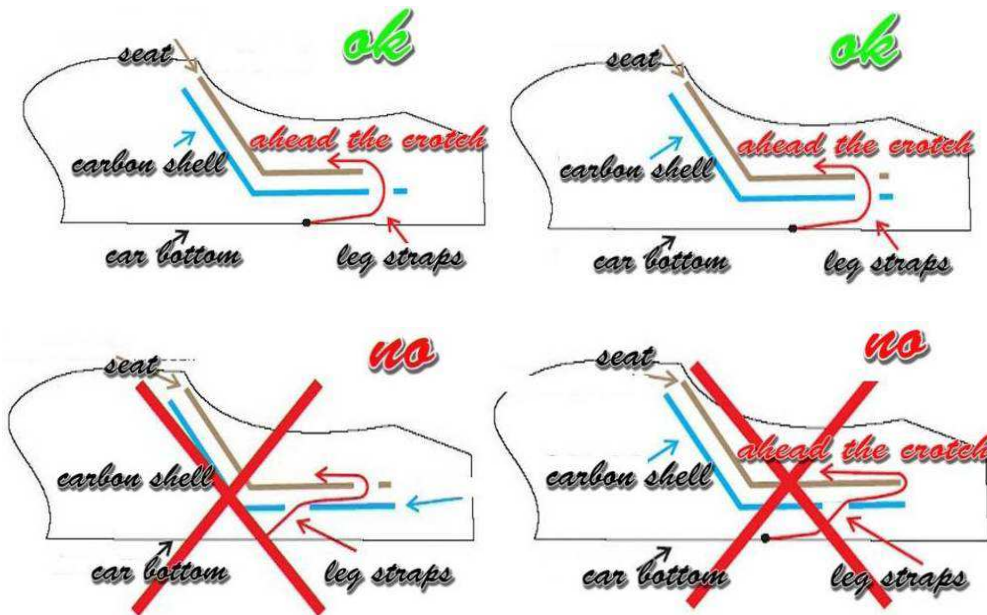
1. Seat modifications

a. Leg straps crossing hole

In order to ensure driver's safety and to respect the crossing of the safety seat belts regarding the FIA rules, an opening must be trimmed in the bottom of the carbon shell following the points below:

- Make sure that the openings for the leg straps in the carbon shell and in the driver seat are aligned relative to each other.
- Make sure that the leg straps come out in front of the driver's crotch

The way to make the openings respecting the FIA regulation is detailed in the following sketches:

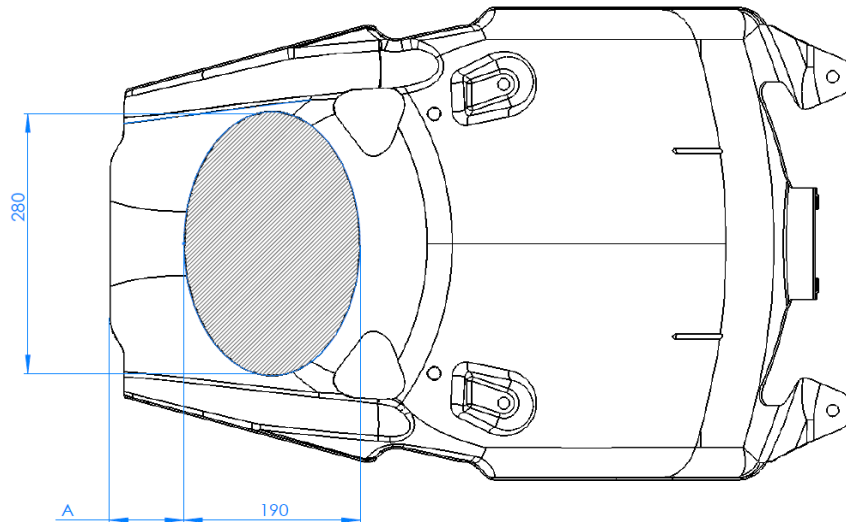


The hole made in the driving seat to pass the leg straps must be large enough. Some tape can be added on the leg straps to avoid any friction.

Failure to respect this rule will be considered as a non conformity

b. Seat bottom hole

We allow moving more backward the seat bottom hole to fit more comfortably the driver as defined below:



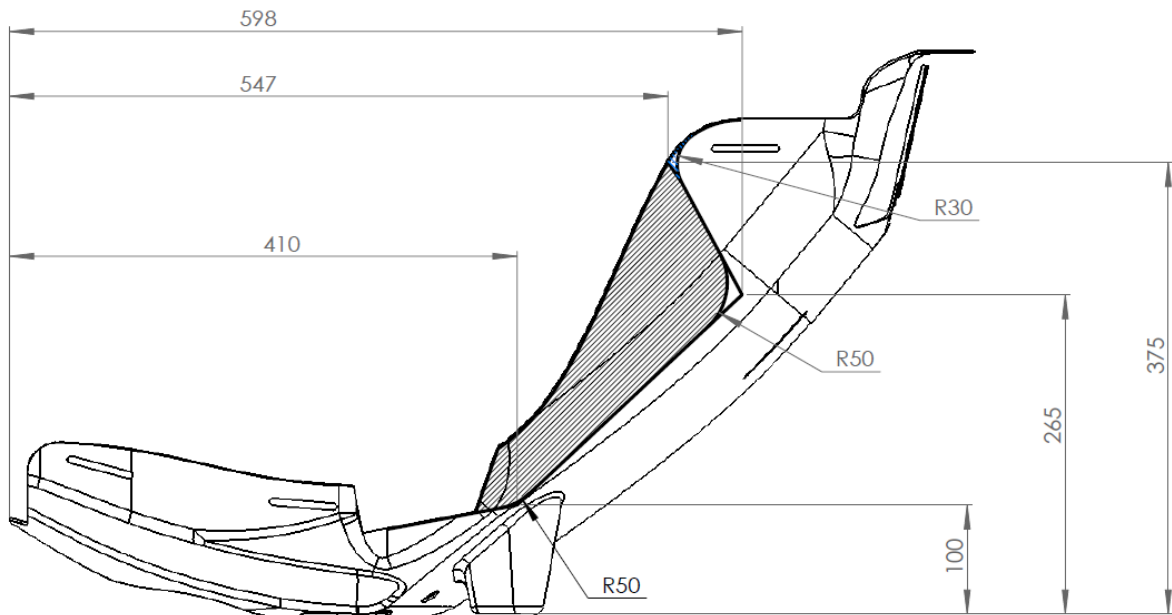
$$70\text{mm} < A < 180\text{mm}$$

This hole of maximum dimensions 190x280mm can be trimmed along the longitudinal axis according to the quotation A between 70mm and 180mm.

This hole can be done independently of the leg straps crossing hole defined in the previous section.

c. Seat side cutting

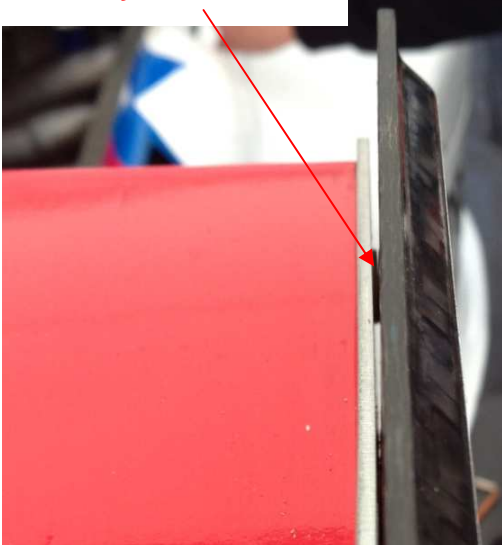
Some drivers asked for seat side trimming to get more space to move their arms. Therefore it is allowed to cut the seat side respecting the sketch below, showing the maximum cutting area allowed:



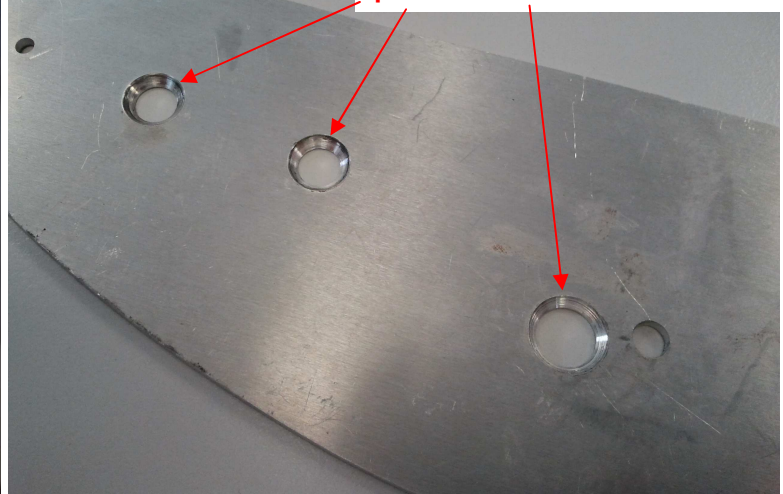
2. Rear flap support plate

Space may be present between the rear flap support plate and the rear endplate (as shown below) inducing stress in the plate when it's tightened. To eliminate this gap, it's allowed to adjust the holes countersinks to drown the screw heads inside the plate.

Gap induced by headscrew



Holes' countersink can be adjusted to drown the headscrews inside the plate





RENAULT *SPORT*

**FORMULA
RENAULT 2.0**

3. Stainless steel front flap bracket

Following the Technical Bulletin N°11, stainless steel front flap brackets have been tried successfully at WSR Motorland, hence these parts are now available at Alpine under the reference below:

- Stainless steel front left flap bracket ref: 77 11 166 833
- Stainless steel front right flap bracket ref: 77 11 166 834

For those involved in the ALPS championship, these parts will be available at Imola at the spare parts truck from Thursday, May 9th, afternoon.

