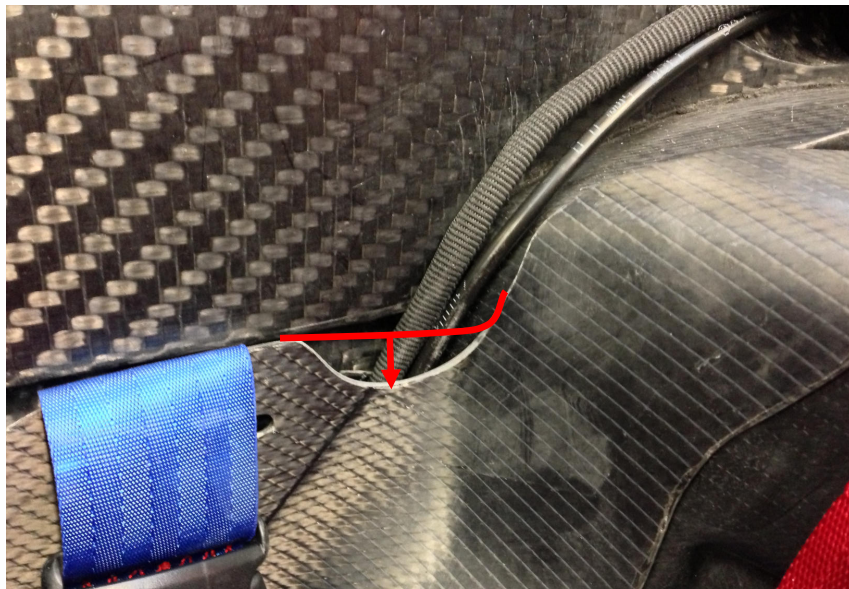


REFERENCE	BT_2013_FR20_1_UK
DATE	31st January, 2013
SUBJECT	Several part Modifications
PART	Extractable seat, ECU tray, Fuel tank hatch, LH & RH floors, fuel tank support foam, Chassis

1. Extractable seat modifications

- o Loom interference

To avoid any contact between the extractable seat and the loom, it is mandatory to trim the seat in its upper section as per the picture below:



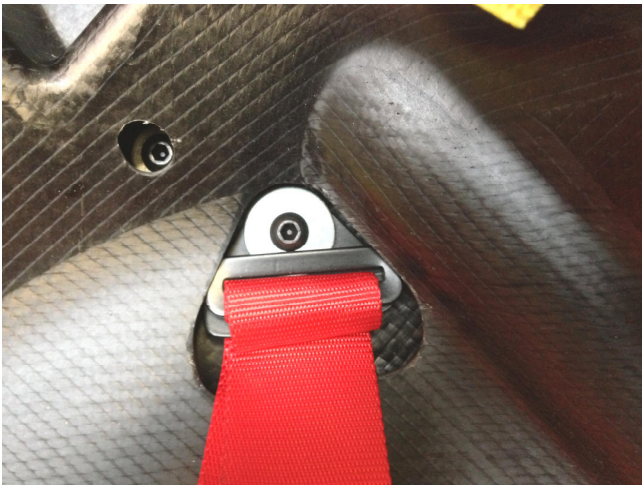
The red line represents the original edge of the seat

- o Lateral seat belts interference

It is allowed to enlarge the opening made in the seat to avoid any contact with the LH strap mounting of the seat belts:



The green line represents the trimming required



Before modification

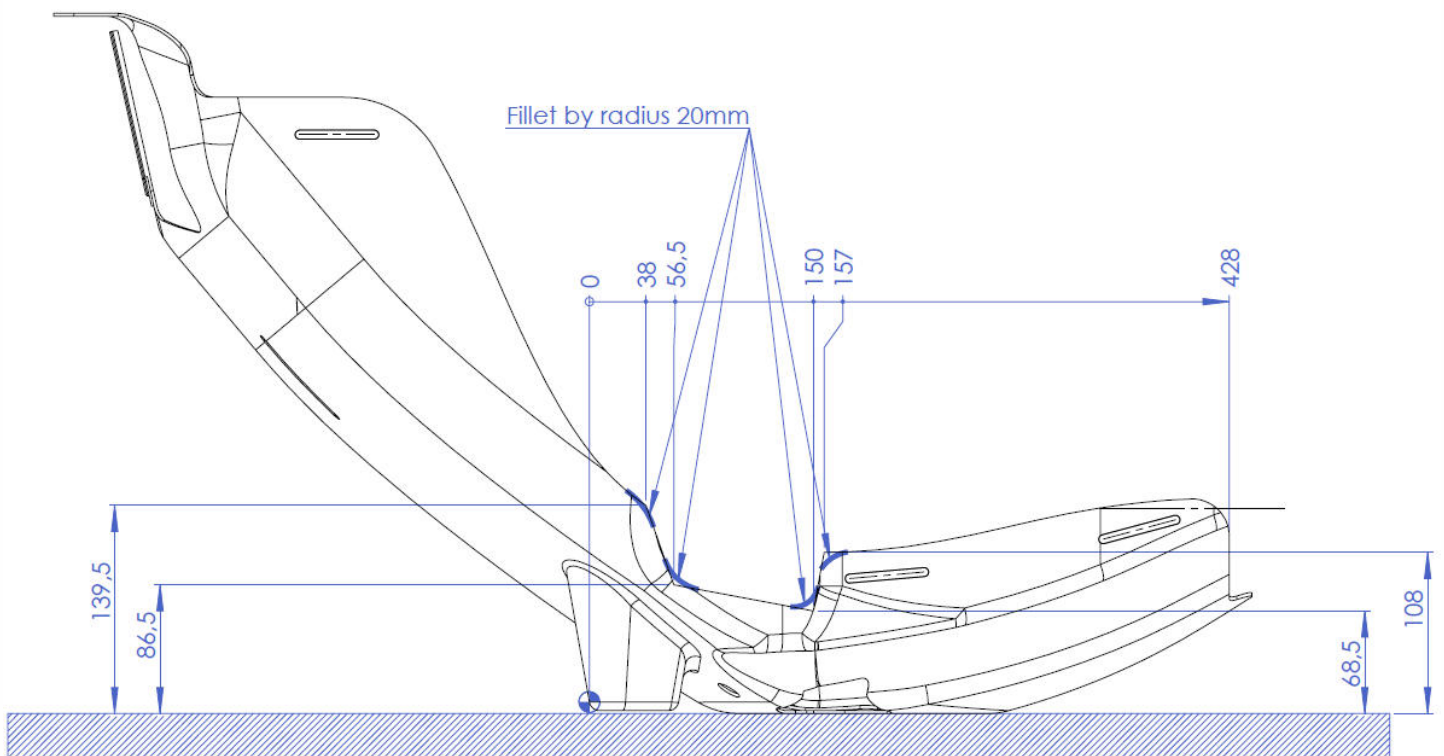


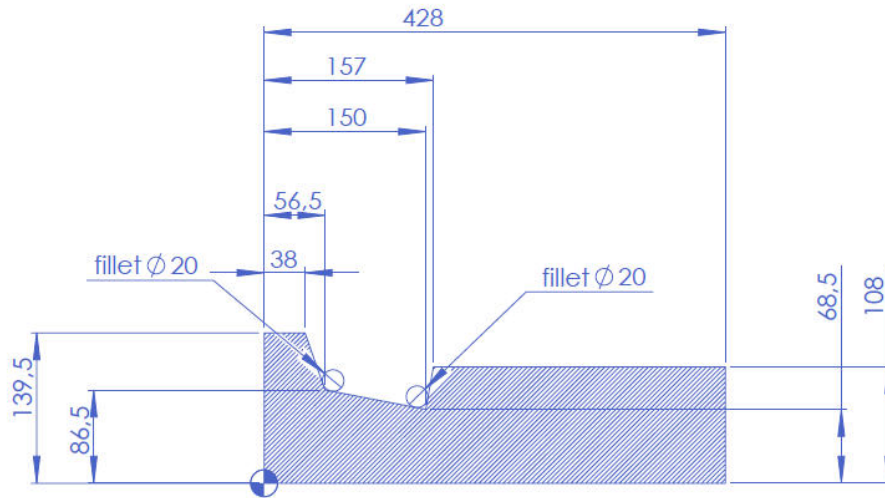
After modification

Moreover, the lateral seat belts may enter in contact with the extractable seat, depending on the thickness of your driver's seat.

Although you are allowed to protect the seat belts, Renault Sport chooses to allow to trim the seat close to the seat belts.

The sketches below are showing the maximum area you are allowed to remove from the extractable seat.





o Brake & clutch lines interference

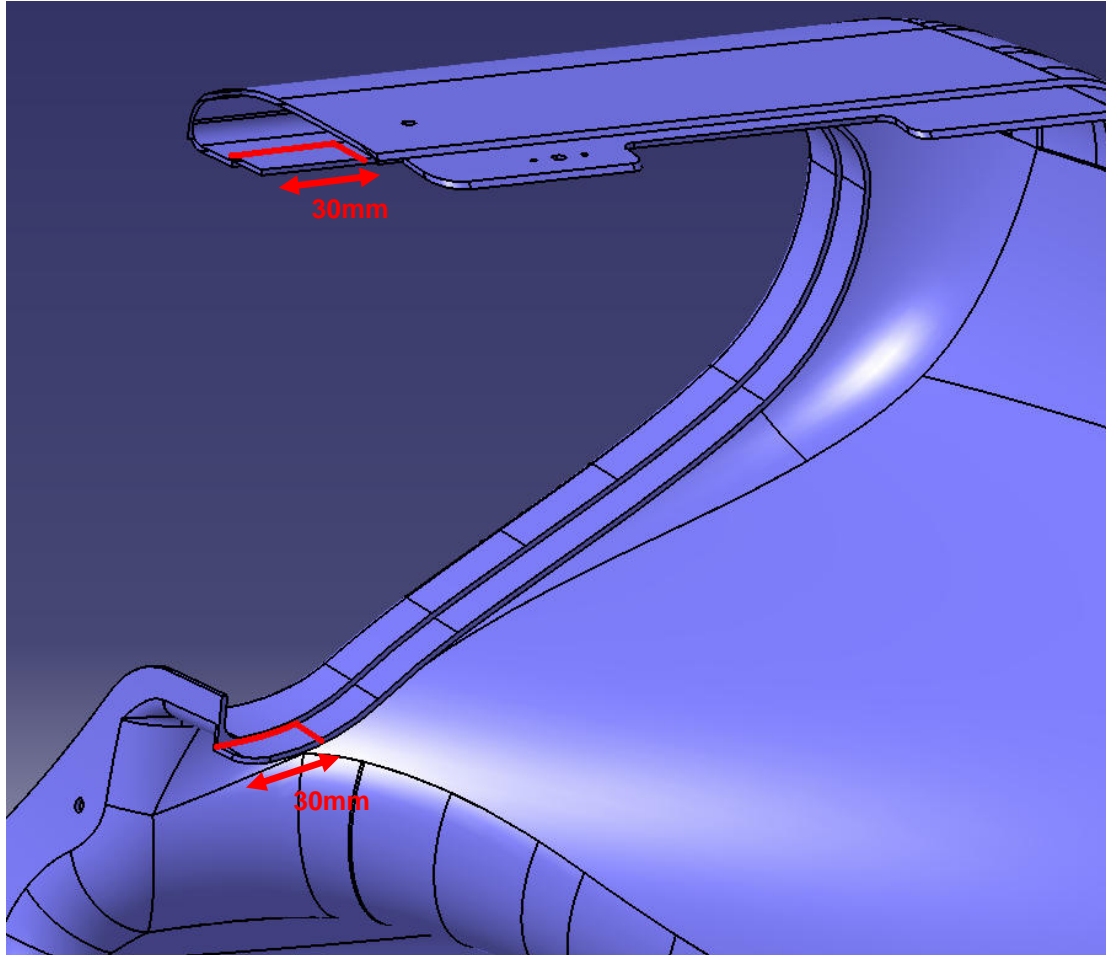
In order to ease the mounting of the carbon seat, we advise you to pass the brake & clutch lines with the extinguisher command loom as per the picture below:



Note: extractable seats on complete cars are already modified.

2. LH & RH floors modification

In order to reach a good adjustment quality between radiator ducts and carbon floors, it is necessary to trim 2 edges on both LH & RH floors as detailed below:



After modification on lower edge

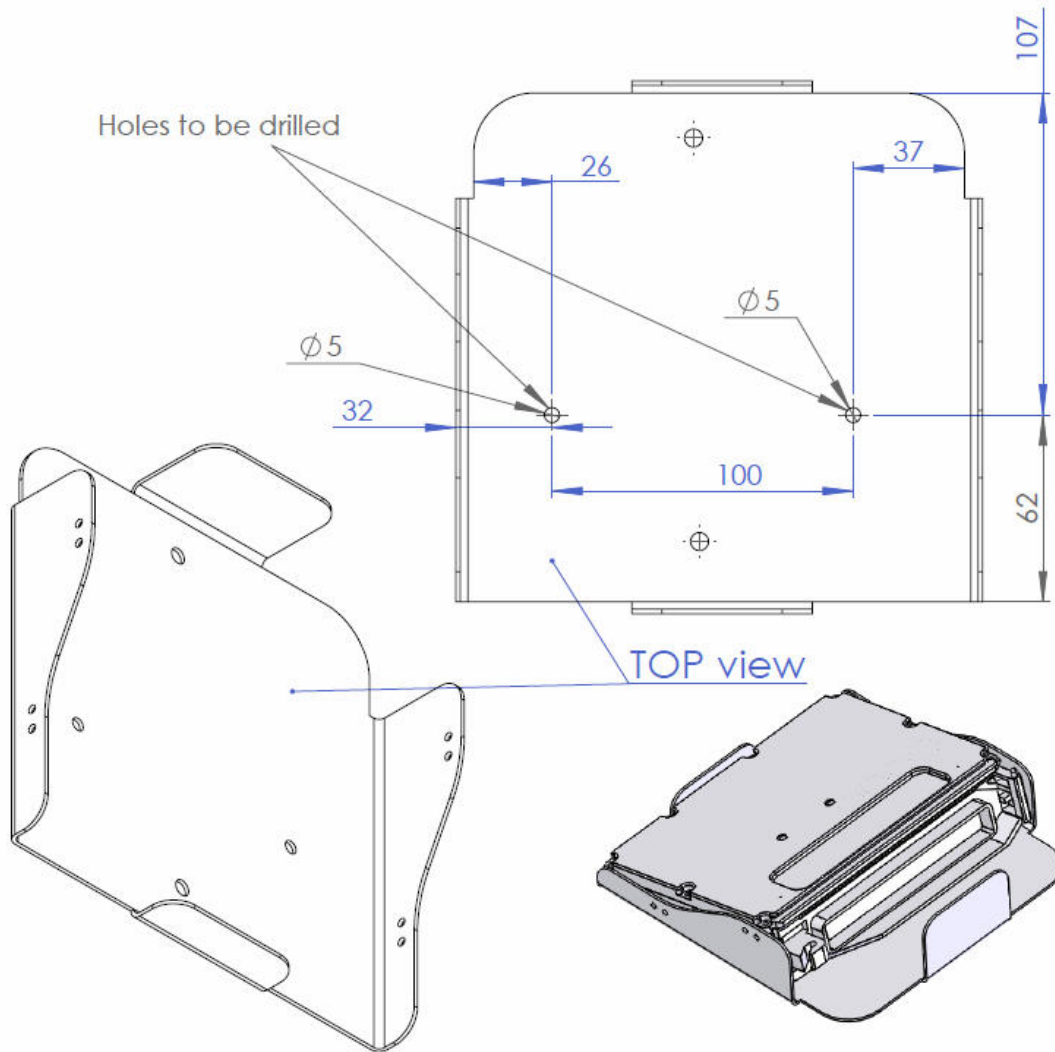


After modification on top edge

Note: floors on complete cars are already modified.

3. ECU tray modification

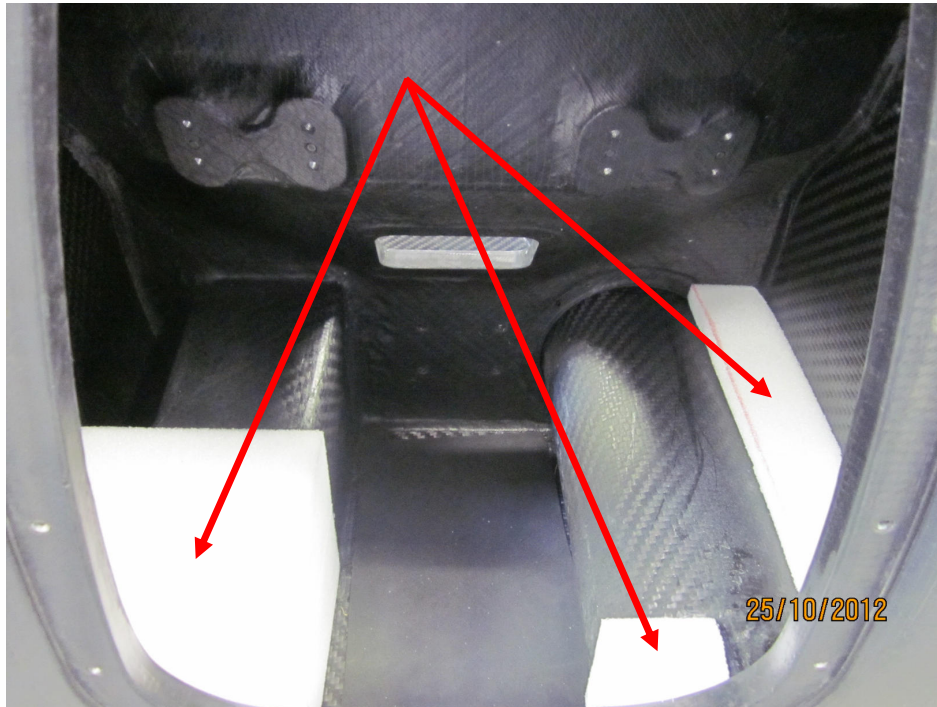
In order to mount the ECU in the correct position, it is mandatory to drill 2 new holes in the original ECU support ref. 77 11 166 411.



Note: ECU trays on complete cars are already modified.

4. Fuel tank support foam

It is allowed to adjust the shape of the foams used to maintain the fuel tank in a proper position.



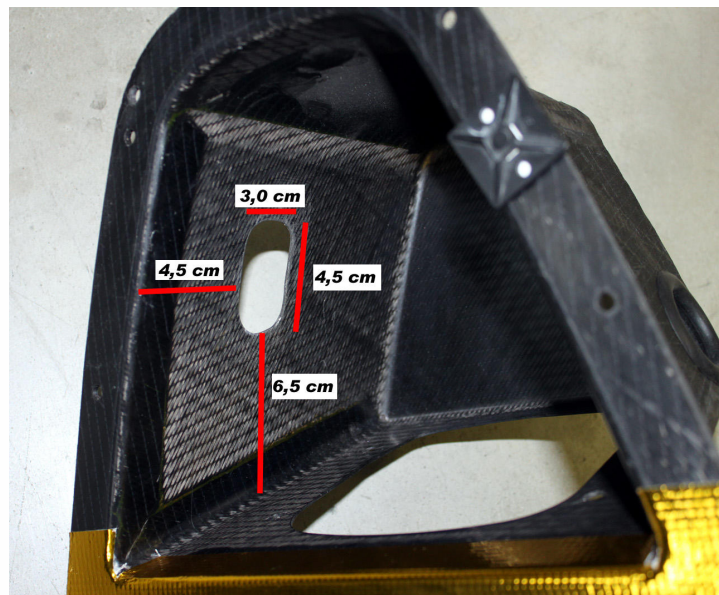
Note: foams on complete cars are already adjusted.

5. Fuel tank hatch modification

It is allowed to create an opening into the fuel tank hatch to ease the fuel pressure connector plugging. It is particularly required when using the old type of fuel pressure sensor ref. 77 11 158 514.



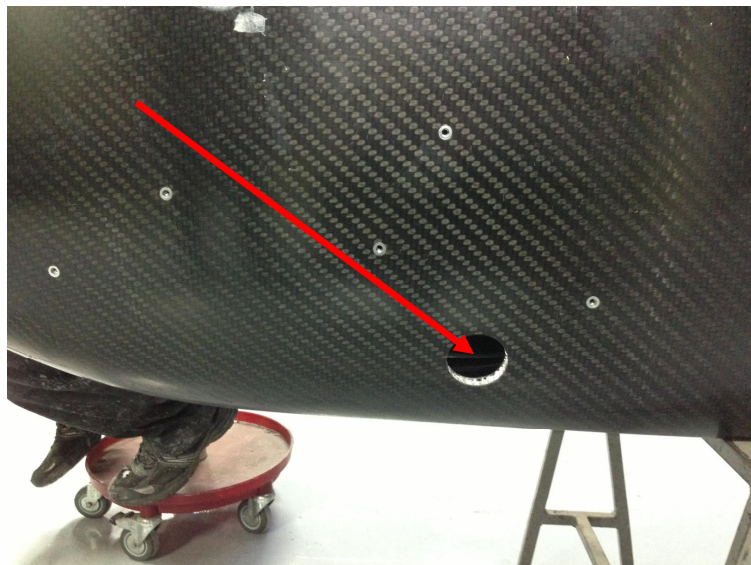
The following dimensions must be considered as guidelines to create the opening:



6. Loom mounting into the chassis

It is allowed to:

- remove the sharp edges of the chassis that are close to the looms and that may damage them.
- add paste or glue inside the loom holes in order to protect the looms.



Main hole for looms where honey comb is visible and could damage the looms