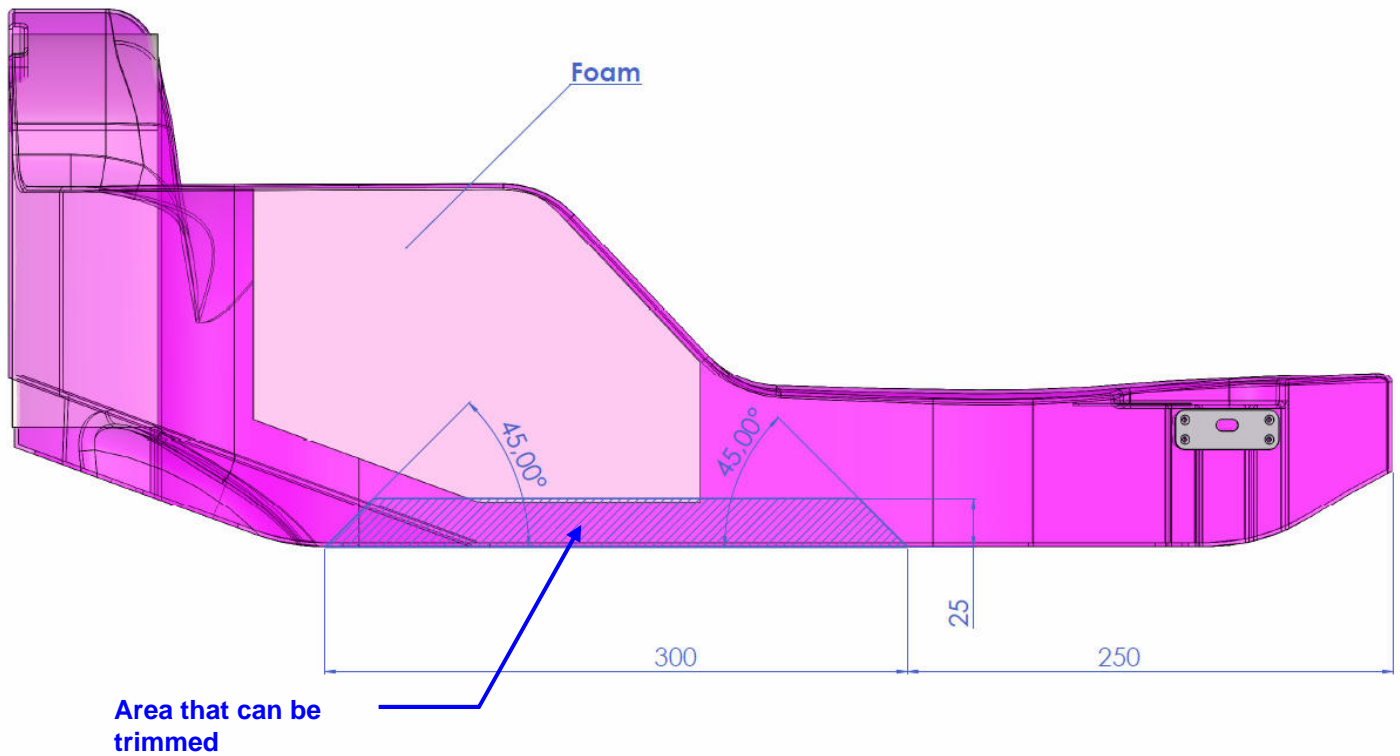


REFERENCE	BT_2013_FR20_3_UK
DATE	7th February, 2013
SUBJECT	Modifications for tall drivers
PART	Pedalbox, headrest

1. Headrest modification

To help tall drivers to fit comfortably into the car, it is allowed to cut the headrest respecting the sketch below:

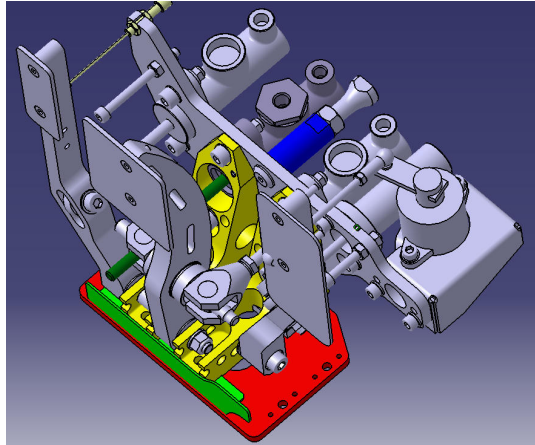


Side view of the headrest

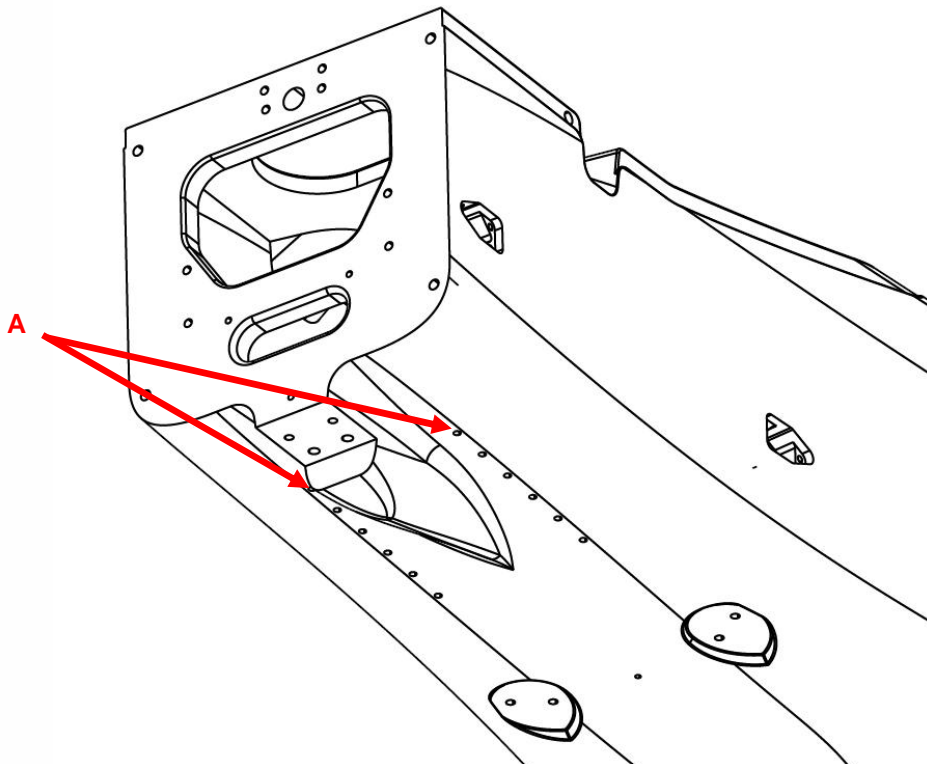
As this modification may result in a headrest more flexible, it is allowed to improve the bonding of the foam to the headrest.

2. Pedalbox modification

A specific pedalbox position has been studied for tall drivers. The best compromise found results in a heel rest position 30mm more forward.



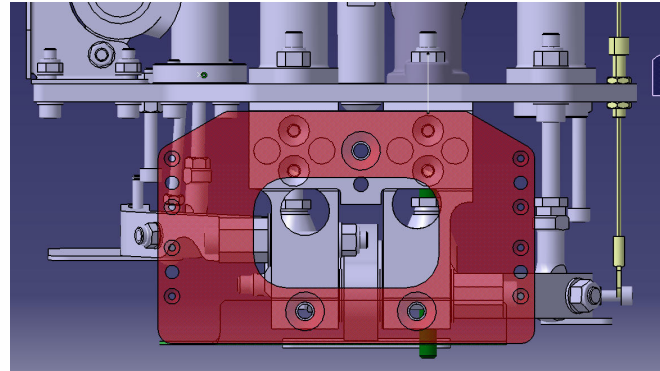
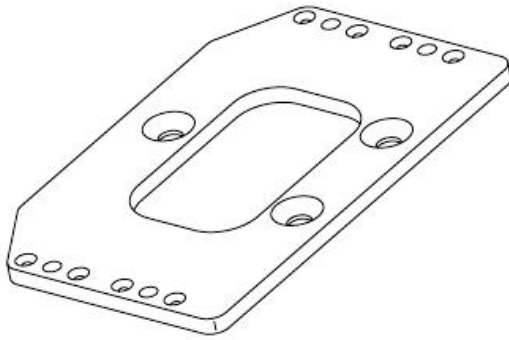
The modifications and the new pedalbox plate detailed below are only allowed when using the pedalbox in the most forward mounting holes, marked "A":



Note: this specific pedalbox position must be used with the specific throttle pedal setup for tall drivers (refer to 2012 User Manual, chapter B while 2013 User manual is not yet available)

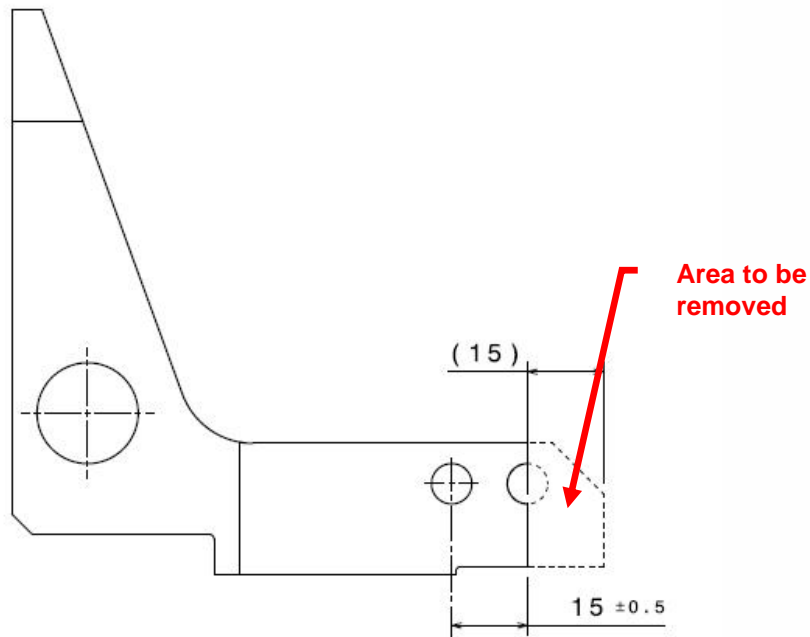
- New pedalbox plate

A new pedalbox plate (ref. 7711166808) has been designed to mount the pedalbox 15mm forward into the chassis. It replaces the original plate ref. 7711166792.



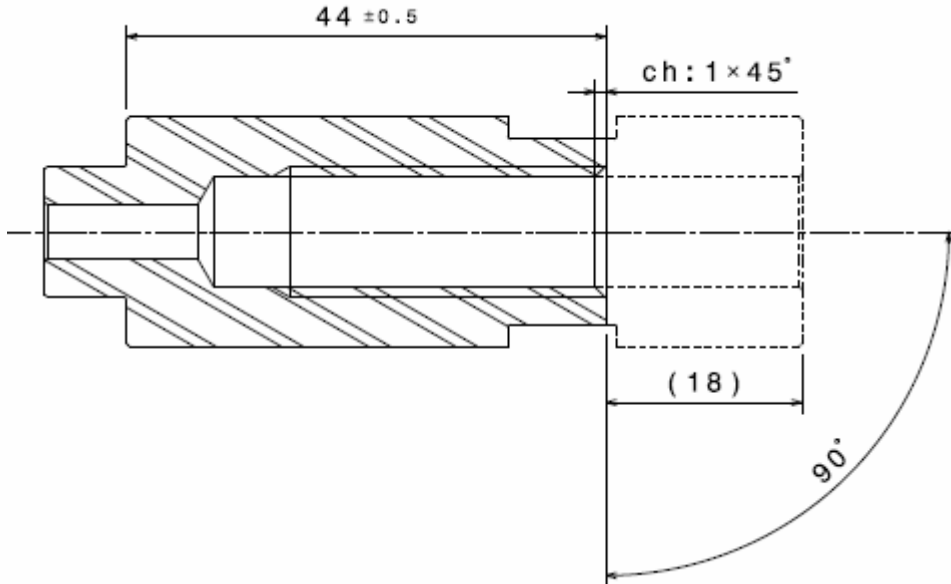
- Modification to the pedalbox supports

The pedalbox supports (ref. 7711166450 & 7711166451) can be modified as shown below, only when using pedalbox plate ref. 7711166808



- Modification to the pedalbox front adjuster

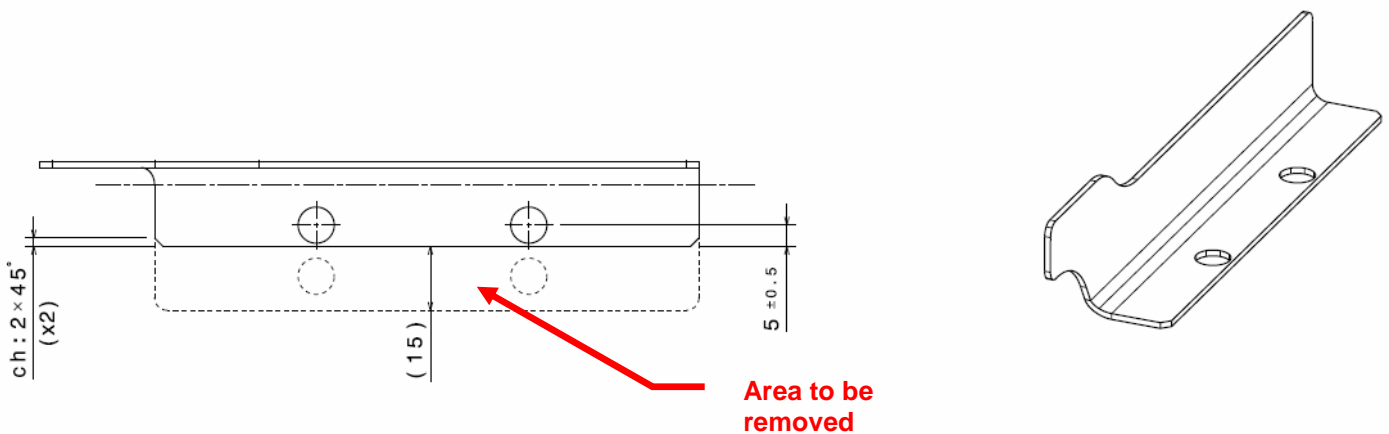
The short pedalbox front adjuster (ref. 7711166477) must be used in this particular position, but it must be shortened as shown below:



Therefore, the pedalbox stop ref. 7711166476 must be shortened as well.

- Modification to the heelrest

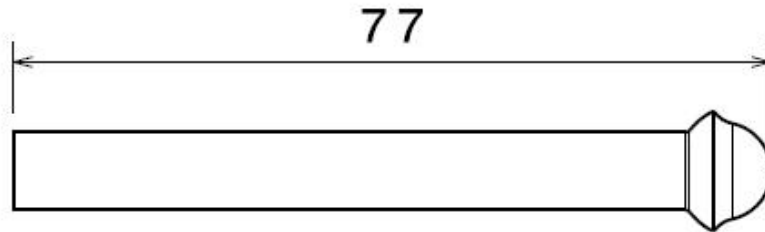
In case of use of the original heel rest (ref. 7711166480), it must be cut as shown below:



- Brake pedal setup

In addition to those modifications, you must take care that the brake pedal will never enter in contact with the pedalbox supports prior to reach the full stroke of the brake master cylinders.

Therefore, the minimum length of the master cylinder rods is 77 mm, measured as shown below:



Note: when reaching the master cylinder full stroke with that kind of setup (ie. Bleeding the circuit), you must really take care of the brake balance bar as it interacts with the throttle pedal.