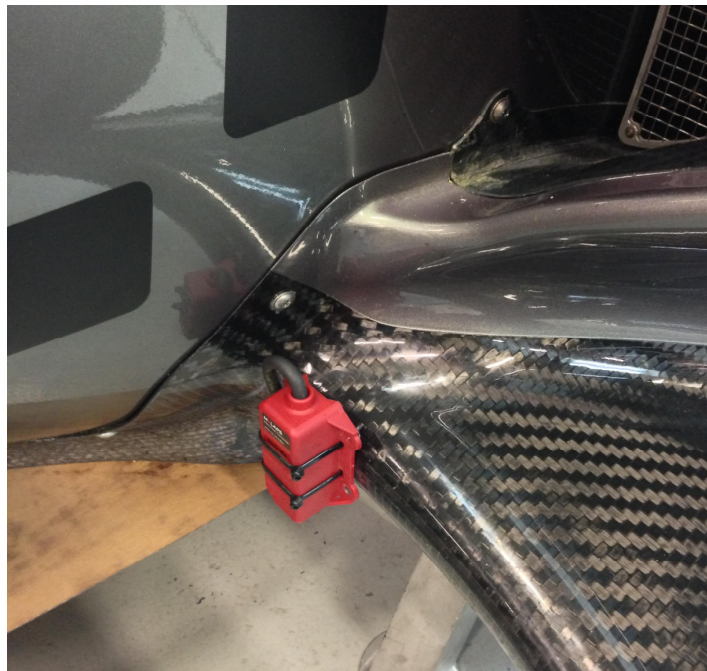


REFERENCE	BT_2013_FR20_5_UK
DATE	18th February, 2013
SUBJECT	Transponder position
PART	Transponder, LH floor, ECU door

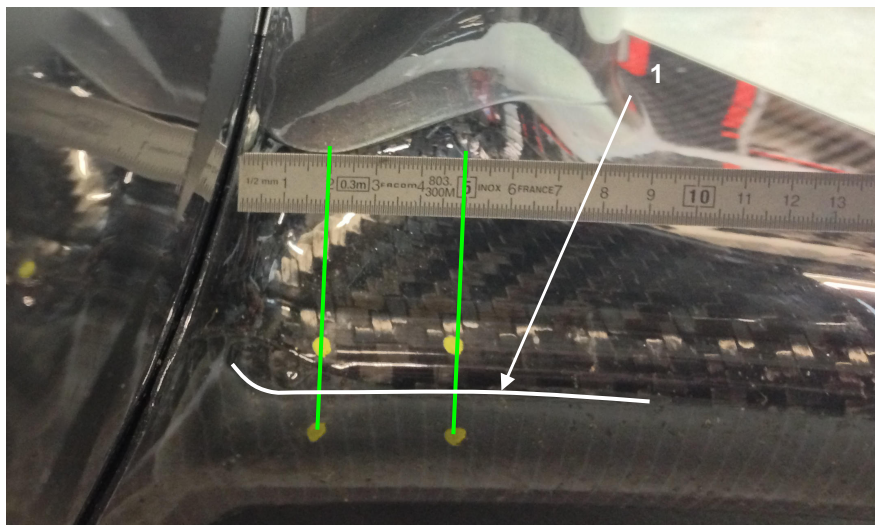
1. Transponder position

The transponder must be fitted to the LH carbon floor, using Ty-Rap® as shown below:



To respect this mounting, you must follow the procedure below:

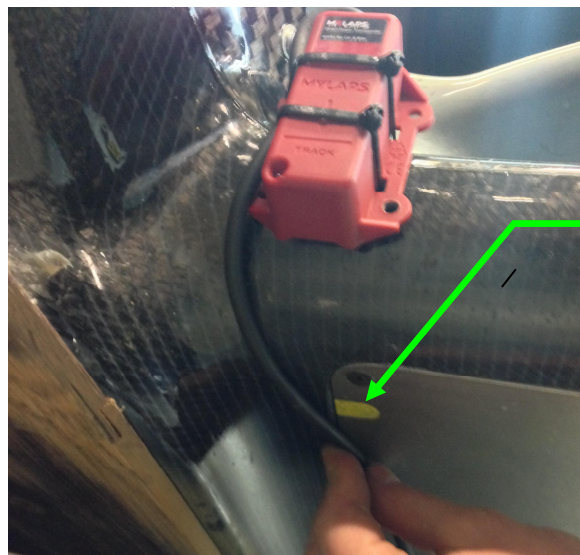
1. Mark the 4 holes on the LH floor: center the holes relative to the leading edge (1) to be sure the transponder will be vertical



2. Drill the 4 holes (max diameter = 6 mm)
3. Fit the transponder using 2 cable ties. Take care to maintain the wire between the cable ties and the transponder to make a loop:



4. Fit a piece of foam between transponder and LH floor then tighten the cable ties.
5. The wire must enter into the LH floor through the ECU door: an opening must be done into the ECU door as shown below:



Area to be trimmed to pass the wire inside the LH floor

6. Use tape to fit the wire to the LH floor. The tape can link ECU door and LH floor only to improve the wire fitting.

Note: it is advised to protect the wire where it goes through the ECU door.